

Gear pump units with automatic relief of pressure in main line

These units are designed for centralized lubrication systems used in conjunction with piston distributors (total-loss lubrication) and are equipped with the **relief and safety valves required for the same**.

The drive is provided by a three-phase motor.

The pumps are located below the grease level, in contrast to oil units.

Intermittent operation is required for the distributors' sequence of operations, i.e. when the pump is running, the distributors are pressurized; when the pump is at rest, the main line is relieved of pressure and the distributors reverse. This work cycle is achieved by timing the electric motor.

For suitable control units see leaflets 1-1700-1-US – 1-1700-4-US

Bestell-Nr.	Delivery-rate [l/min]	Reservoir capacity [l]	Reservoir material *)	Lubricant level monitoring	Special technical feature
MFE2-KW3F-2	0.2	3	K	●	– 24 V lubricant level switch with M12x1 plug connector
MFE2-KW3F-S9	0.2	3	K	●	– 24 V level monitoring with M12x1 plug connector – Motor with Harting connector to DaimlerChrysler specs
MFE2-KW3F-S11 -	0.2	3	K	●	– 24 V level monitoring with M12x1 plug connector – IP55 type of motor enclosure
MFE2-KW3F-S13	0.2	3	K	●	– 24 V level monitoring – Motor UL (appr.)
MFE2-KW6F-S1	0.2	6	K	●	– 2 24 V lubricant level switches for minimum and advance warning
MFE2-KW6F-S5	0.2	6	K	●	– 2 24 V lubricant level switches for minimum and advance warning – Filler coupling to WV AG specs
MFE2-KW6F-S6	0.2	6	K	●	– 2 24 V lubricant level switches for minimum and advance warning – Filler coupling to CNOMO (France) specs
MFE2-KW6F-S7	0.2	6	K	●	– 2 24 V lubricant level switches for min. and max. level
MFE2-KW6F-S13	0.2	6	K	●	– 2 24 V lubricant level switches for minimum and advance warning – Motor UL (appr.)
MFE2-KW6F-S16	0.2	6	K	●	– 2 24 V lubricant level switches for minimum and advance warning with M12x1 plug connector – Filler coupling
MFE2-KW6F-S21	0.2	6	K	●	– 2 24 V lubricant level switches for minimum and advance warning with M12x1 plug connector – Motor with Harting connector to DaimlerChrysler specs
MFE2-BW7F-S3	0.2	6	M	●	– 2 24 V lubricant level switches for minimum and advance warning – Filler coupling to VW AG specs

*) reservoir material: **K = plastic**
M = metal

Technische Daten

Order No. **MFE2-KW3F-2** **MFE2-KW6F-S1**
 Reservoir capacity 3 liters 6 liters

Unit

Flow rate ¹⁾ 0.2 l/min
 Continuous operation atp max 20 bars
 Brief operation atp max 38 bars
 Operating temperature + 10 to +40 °C
 Mounting position as shown
 Lubricant fluid grease, NLGI grades 000, 00
 compatible with plastics, NBR elastomers,
 copper and copper alloys

Motor

Rated power 70 W
 Speed ¹⁾ 2700 rpm
 Type of enclosure to DIN 40050 IP54
 Insulation class F
 Voltage cf. table
 Frequency 50/60 Hz

Level switch

Mains connection 50/60 Hz: MFE2-KW3F-2 24 V DC
 250 mA
 MFE2-KW6F-S1 10 to 55 V DC
 Connectable load: brief operation (max. 1s) max. 1 A
 continuous operation max. 350 mA

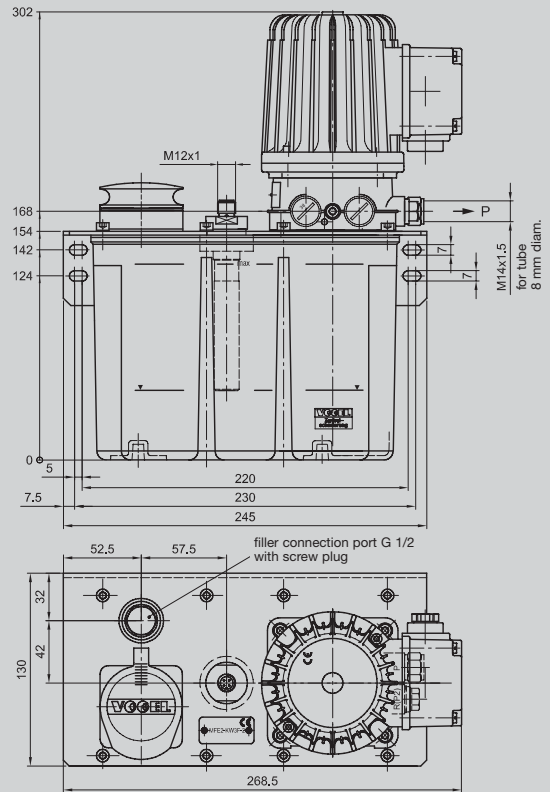
(Other units on request)

¹⁾ Bei Frequenz 50 Hz

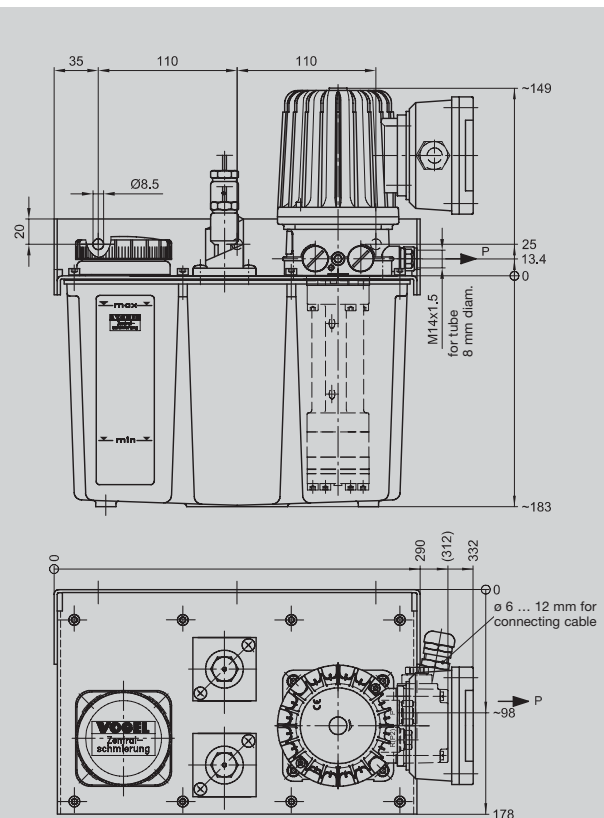
Voltage (please indicate range when ordering)

Range I	Δ/Y 100-130 V / 173-225 V, 50 Hz	Δ/Y 0.90/0.53 A
	Δ/Y 120-156 V / 208-270 V, 60 Hz	
Range II	Δ/Y 207-254 V / 360-440 V, 50 Hz	Δ/Y 0.50/0.29 A
	Δ/Y 249-305 V / 432-528 V, 60 Hz	
Range III	Δ/Y 230-290 V / 398-500 V, 50 Hz	Δ/Y 0.40/0.23 A
	Δ/Y 290-346 V / 500-600 V, 60 Hz	

Any voltages deviating from these ranges can only be used for the respectively ordered voltage and frequency.



MFE2-KW3F-2



MFE2-KW6F-S1