

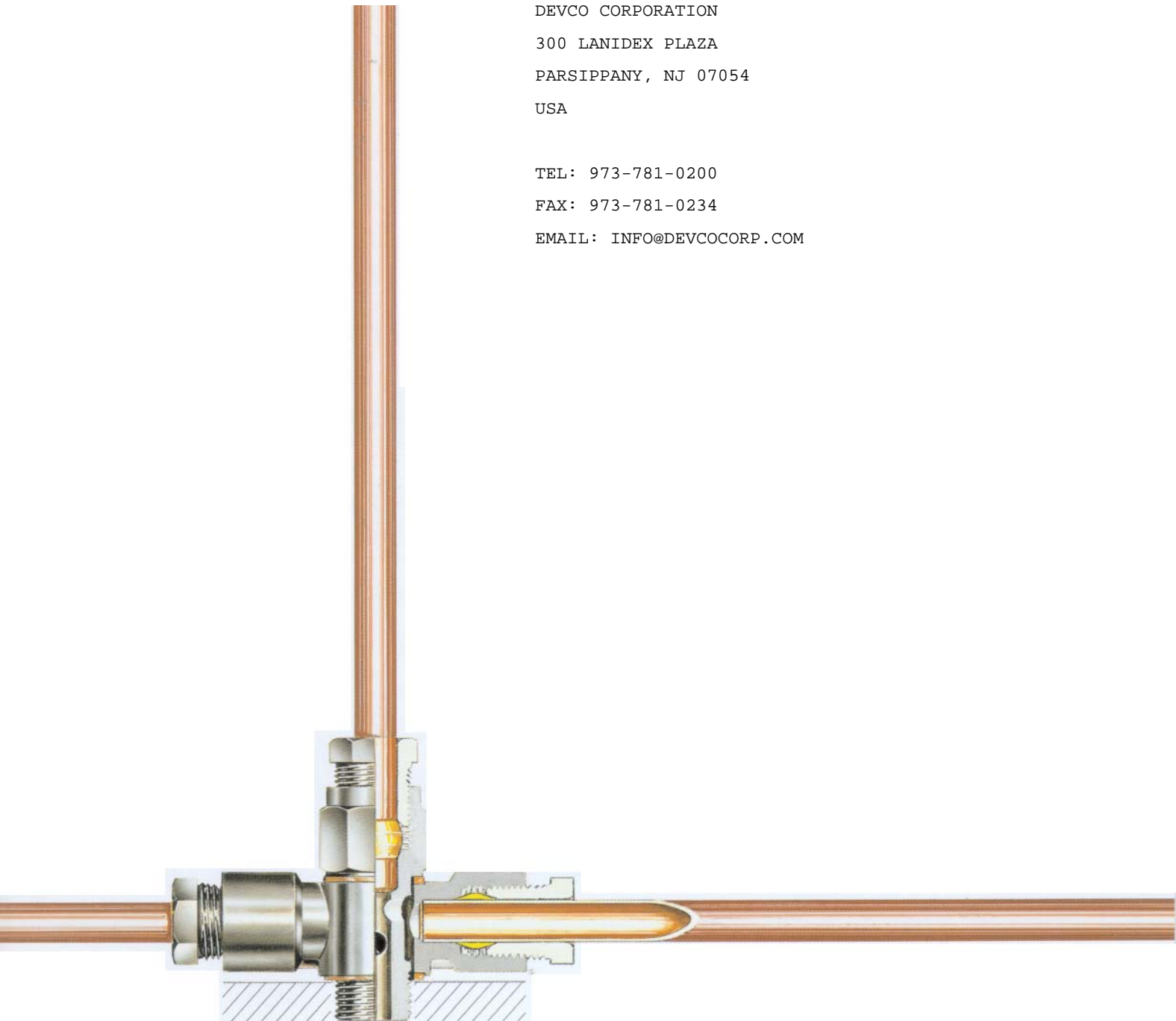
Fittings and Accessories

1-0103-US

for Centralized Lubrication Systems and General Use

DEVCO CORPORATION
300 LANIDEX PLAZA
PARSIPPANY, NJ 07054
USA

TEL: 973-781-0200
FAX: 973-781-0234
EMAIL: INFO@DEVCOCORP.COM



Contents

	Page
Adaptors	9, 10
Banjo fittings	17,19
Bolts	21
Bracketed connectors	14
Bulkhead connectors	11
Connectors for pressure gauges	18, 20
Connectors for steel, copper and plastic tubing	8
Connectors, tube to tube	13
Counterbores for solderless tube connection	7
Cross joints	16
Cutting sleeves	18
Cutting sleeve screw unions	18-21
Distributor manifolds	16
Double tapered sleeves	8
Elbow bulkhead connectors	19
Elbow connectors	14
Elbow connectors (tube to tube)	19
Elbows	11, 12
Elbow screw-in connectors	19
Fixing bolts	21
Fixing clips	22
Flat washers	12
Form counterbores	7
Four-way connectors	19
High-pressure hoses	25
Hoses for main and secondary lines	24
Hoses suitable for self-installation	24
Lock washers	21
Nuts	21
Oil reservoirs	35, 36
Plastic tubing	22
Pressure filters	30-32
Pressure gauges	34
Quick-disconnect couplings	27
Reducing adapters	10
Reducing connectors	18
Reinforcing sockets	8
Relief valves	28
Rotating joints	26
Safety valves	29
Screen filters	33
Screw plugs	12
Shut-off valves	27
Socket unions	8
Steel tubing	22
Straight bulkhead connectors	19, 20
Straight connectors (tube to tube)	18, 20
Straight screw-in connectors	18, 20
Strainers	33
Tapered sleeves	8
Tee-connectors	15, 19
Threaded sockets	13
Tubing	22
Union nuts	18
Washers	12

Notice!

All products from VOGEL may be used only for their intended purpose. If operating instructions are supplied together with the products, the provisions and information therein of specific relevance to the equipment must be observed as well.

In particular, we call your attention to the fact that hazardous materials of any kind, especially the materials classified as hazardous by EC Directive 67/548/EEC, Article 2, Par. 2, may only be filled into VOGEL centralized

lubrication systems and components and delivered and/or distributed with the same after consultation with and written approval from VOGEL.

All products manufactured by VOGEL are not approved for use in conjunction with gases, liquefied gases, pressurized gases in solution and fluids with a vapor pressure exceeding normal atmospheric pressure (1013 mbars) by more than 0.5 bar at their maximum permissible temperature.

Order No. Index

Order No.	Page	Order No.	Page	Order No.	Page	Order No.	Page
B3-S1	36	DIN72573-3x6-ST	23	WVN701-4	24	202-085-S	27
B7	36	DIN72573-4x6-ST	23	WVN701-6	24	202-175-30	28
BW3-S9	36	DIN72573-5x6-ST	23	WVN701-8	24	202-275-2	28
BW3-S81	36	DIN72573-6x6-ST	23	WVN711-10	25	206-444	33
BW7-S6	36	DIN72573-2x8-ST	23	WVN711-10+AF2	25	207-168-2	27
BW7-S7	36	DIN72573-3x8-ST	23	WVN715-RO2.5x0.5	22	207-168.U7	27
BW7-S8	36	DIN72573-4x8-ST	23	WVN715-RO4x0.85	22	207-168.U2	27
BW7-S11	36	DIN72573-5x8-ST	23	WVN715-RO6x1	22	207-188-2	27
BW7-S12	36	DIN72573-6x8-ST	23	WVN715-RO6x1.25	22	207-188.U11	27
D301-001-MS	9	DIN72573-2x10-ST	23	WVN715-RO8x1.25	22	208-444	33
D301-005-MS	9	DIN72573-3x10-ST	23	WVN715-RO10x1.5	22	208-555	33
D301-020-MS	9	DIN72573-4x10-ST	23	WVN715-RO12x1	22	210-444	33
D406-004-MS	9	DIN72573-5x10-ST	23	WVN715-RO12x1.5	22	210-555	33
D408-004-MS	9	DLY930-2	26	WVN716-RO4x0.85	22	212-444	3
DAK506	16	DLY931	26	WVN716-RO6x1.25	22	213-870	33
DAK508	16	DLY932	26	WVN716-RO8x1.25	22	213-870F	33
DAK510-S1	16	DY958	12	161-212-054	29	213-880	33
DAK512	16	DY960	12	161-600-036	27	213-890	33
DAR506	14	DY961	12	162-210-005	36	213-900	33
DAR508	14	DY962	12	162-310-005	36	213-910	33
DAR510	14	DY964	15	169-100-100	34	213-920	33
DAR510-S1	14	DY966	15	169-101-004	34	213-930	33
DAR524	14	DZ333	10	169-102-506	34	213-940	33
DAR534	14	DZ334	10	169-104-008	34	243-001.10	10
DAT506	15	K1	35	169-106-003	34	243-001.20	10
DAT508	15	K3-S2	35	169-106-004	34	248-601.00	34
DAT510	15	K6-S5	35	169-106-007	34	248-601.10	34
DAT510-S1	15	KW1	35	169-106-009	34	248-602.00	34
DAT512	15	KW1-S2	35	169-110-009	34	248-602.20	34
DIN84-M3x5-4.8	21	KW3-S1	35	169-116-000	34	248-602.25	34
DIN84-M5x8-4.8	21	KW3-S3	35	169-120-000	34	248-603.00	34
DIN84-M5x16-4.8	21	KW3-S5	35	169-125-000	34	248-603.10	34
DIN84-M5x20-4.8	21	KW6-S1	35	169-140-001	34	248-604.00	34
DIN84-M6x16-4.8	21	KW6-S2	35	169-460-110	31	248-604.10	34
DIN84-M6x20-4.8	21	KW6-S81	35	169-460-111	31	248-605.00	34
DIN84-M6x25-4.8	21	KW6-V57	35	169-460-112	31	248-610.01	18
DIN910-R1-8-5.8	12	P-78.01	10	169-460-112-V70	31	248-610.02	33
DIN910-R1-4x8-5.8	12	SLH6-180	25	169-460-115	31	267-001.03	10
DIN910-R3-8-5.8	12	SLH8-180	25	169-460-116	31	267-001.13	9
DIN910-R1-2-5.8	12	SLH10-180	25	169-460-117	31	267-001.17	9
DIN910-R3-4-5.8	12	WV-RO2.5x0.5-VERZI	22	169-460-120	31	267-001.19	9
DIN910-R1-5.8	12	WV-RO4x0.7-VERZI	22	169-460-121	31	267-001.36	10
DIN912-M4x20-8.8	21	WV-RO6x0.7-VERZI	22	169-460-122	31	267-001.47	10
DIN912-M6x16-8.8	21	WV-RO6x1-VERZI	22	169-460-123	31	267-001.60	10
DIN912-M6x25-8.8	21	WV-RO8x0.7-VERZI	22	169-460-130	31	301-001	9
DIN912-M6x60-8.8	21	WV-RO8x1-VERZI	22	169-460-131	31	301-001DK	11
DIN912-M8x16-8.8	21	WV-RO10x1-VERZI	22	169-460-132	31	301-005	9
DIN931-M6x30-5.8	21	WVN200-4A16	29	169-460-140	31	301-020	9
DIN934-M5-8	21	WVN200-4A25	29	169-460-141	31	301-034	33
DIN934-M6-8	21	WVN200-6B0.5	29	169-460-142	31	301-105K	10
DIN936-M14x1.5-5	21	WVN200-6B16	29	169-460-143	31	301-134	33
DIN936-M16x1.5-5	21	WVN200-6B40	29	169-460-145	31	321-661	16
DIN936-M20x1.5-5	21	WVN200-6B80	29	169-460-146	31	322-541	16
DIN7513-BM4x20	21	WVN200-8B0	29	169-460-150	31	322-561	16
DIN7513-BM4x25	21	WVN200-8B3	29	169-460-152	31	322-581	16
DIN7513-BM5x10	21	WVN200-8B5	29	169-460-160	31	322-661	16
DIN7513-BM6x16	21	WVN200-8B12	29	169-460-162	31	322-661-S1	16
DIN7513-BM6x25	21	WVN200-8B16	29	169-460-170	31	323-541	16
DIN7603-A6x10-CU	12	WVN200-8B20	29	169-460-181	31	323-561	16
DIN7603-A8x11.5-CU	12	WVN200-8B32	29	169-460-186	31	323-581	16
DIN7603-A14x18-CU	12	WVN200-8B32	29	169-460-187	31	323-661	16
DIN7603-A16x20-CU	12	WVN200-8D50	29	169-460-184	31	323-661-S1	16
DIN7603-A17x21-CU	12	WVN200-8D75	29	169-460-187	31	324-561	16
DIN7603-A18x22-CU	12	WVN200-8D75	29	169-460-188	31	324-581	16
DIN7603-A20x24-CU	12	WVN200-8D120	29	169-460-189	31	324-761	16
DIN7603-A21x26-CU	12	WVN200-8D220	29	169-460-232	31		
DIN7603-A22x27-CU	12	WVN200-10E6	29	169-460-233-V57	31		
DIN72573-2x6-ST	23	WVN200-10E12	29	169-460-233-V64	31		
		WVN200-10E25	29	169-460-233-V70	31		
		WVN200-10E35	29	169-460-234	31		
		WVN200-10E60	29	169-460-234-V57	31		
				169-460-234-V64	31		
				169-460-234-V70	31		

Order No. Index

Order No.	Page	Order No.	Page	Order No.	Page	Order No.	Page
324-861	16	404-040	9	406-708-001(-VS)	24	410-413W	18
325-565	16	404-040K	10	406-710-002	25	410-416	19
325-861	16	404-045	10	406-804-001	24	410-425	19
326-581	16	404-047K	10	406-805	13	410-433W	18
326-661	16	404-054K	10	406-806-001	24	410-443	18
326-663	16	404-061	9	406-808-001	24	410-443W	18
327-761	16	404-063	9	406-810-002	25	410-463	18
328-561	16	404-162	9	408-001	8	410-603	8
328-581	16	404-164	9	408-004	9	410-611	8
328-761	16	404-203	13	408-005	9	410-612	8
328-861	16	404-403W	18	408-006	9	410-612-MS	8
329-561	16	404-404	18	408-008	13	412-001	8
329-761	16	404-413	18	408-010	13	412-002	2
330-581-S1	16	404-425	19	408-011	12	412-004	9
330-761	16	404-603	8	408-013	14	412-008	13
330-861	16	404-611	8	408-022	9	412-010	13
331-761	16	404-612	8	408-023	13	412-011	12
332-761	16	404-612-MS	8	408-033-S3	13	412-014	9
332-861	16	404-662K	10	408-103	13	412-162	9
334-861	16	404-663K	10	408-120	26	412-163	9
336-861	16	404-673K	10	408-154	9	412-164	9
338-861	16	405-619-061	17	408-162	9	412-301	18
340-861	16	406-001	8	408-202	8	412-302	18
342-861	16	406-002	8	408-211	12	412-403	18
344-861	16	406-004	9	408-301	18	412-403W	18
401-004-512	10	406-004DK	11	408-302	18	412-405	19
401-011-132	10	406-004K	10	408-403W	18	412-405W	19
401-013-111	10	406-005	13	408-405W	19	412-407	19
401-013-131	10	406-008	13	408-406	18	412-409	19
401-013-161	10	406-010	13	408-407	19	412-410	18
401-013-171	10	406-011	12	408-408	18	412-411	18
401-016-312	10	406-024	10	408-409	19	412-412	18
401-016-371	10	406-044-S1	10	408-411	18	412-416	19
401-019-132	10	406-054	9	408-413	18	412-423	18
401-019-352	10	406-054K	10	408-413W	18	412-423W	18
401-504-192	26	406-055	9	408-416	19	412-433	18
401-504-292	26	406-103	13	408-423W	18	412-453	18
401-506-313	26	406-158	9	408-425W	19	412-453W	18
402-001	8	406-162	9	408-453W	18	412-603	8
402-002	8	406-163	9	408-603	8	412-611	8
402-003	9	406-166	9	408-611	8	412-612	8
402-003K	10	406-167	9	408-612	8	415-403	18
402-004	9	406-167	9	408-612-MS	8	415-403W	18
402-006	9	406-203	13	410-001	8	415-405	19
402-006K	10	406-233	13	410-002	8	415-405W	19
402-008K	10	406-301	18	410-003	13	415-407	19
402-011	12	406-302	18	410-003-B	13	415-409	19
402-603	8	406-331	18	410-004	9	415-410	18
402-611	8	406-332	18	410-004DK	11	415-415	18
402-612	8	406-403	18	410-008	13	415-416	19
403-006-651	11	406-403W	18	410-010	13	415-423W	18
404-001	8	406-405	19	410-011	12	415-433W	18
404-002	8	406-405W	19	410-013	14	415-443W	18
404-003	9	406-406	18	410-018	9	418-403	18
404-003DK	11	406-407	19	410-022	9	418-403W	18
404-003K	10	406-409	19	410-160	9	418-405W	19
404-006	9	406-411	18	410-162	9	418-407	19
404-006DK	11	406-413	18	410-163	9	418-409	19
404-006K	10	406-416	19	410-164	9	418-412	18
404-008	13	406-423	18	410-171	9	418-416	19
404-009	13	406-425	19	410-301	18	418-418	18
404-010	13	406-433	18	410-302	18	422-407	19
404-011	12	406-435	19	410-403	18	422-412	18
		406-443	18	410-403W	18	422-416	19
		406-445	19	410-405	19	433-890-131	10
		406-515W	19	410-405W	19	441-008-511	18
		406-603	8	410-406	18	441-015-171	18
		406-611	8	410-407	19	441-022-171	18
		406-612	8	410-408	18	441-106-162	20
		406-612-MS	8	410-409	19	441-110-163	18
		406-613	8	410-410	18		
		406-704-001(-VS)	24	410-411	18		
		406-706-001(-VS)	24	410-413	18		

Order No. Index

Order No.	Page	Order No.	Page	Order No.	Page	Order No.	Page
443-190-901	19	504-101	17	510-024	17	853-380-004(-VS)	25
443-215-001	19	504-102	17	510-102	15	853-390-002(-VS)	25
443-218-001	19	504-103	14	510-142	17	853-390-003(-VS)	25
443-290-001	19	504-105	17	510-145	17	853-540-010	25
443-706-121	18	504-106	17	510-242	17	902-111	7
443-706-151	18	504-108	17	510-341	17	904-411	7
443-706-181	18	504-109	17	510-342	17	906-411	7
443-708-121	18	504-110	17	510-343	17	908-411	7
443-708-151	18	504-111	17	510-410	18	910-411	7
443-708-181	18	504-112	17	510-412	18	912-411	7
443-710-181	18	504-114	17	510-413	18	982-750-091	25
443-712-151	18	504-115	17	510-442	17	982-750-091+AF2	25
443-715-181	18	504-161	17	512-410	18		
445-513-181	19	504-162	17	512-412	18		
445-516-061	19	504-200K	11	514-018K	11		
445-516-081	19	504-201K	11	515-410	18		
445-516-101	19	504-202K	11	568-342	17		
445-517-222	19	504-203K	11	568-442	17		
445-519-061	19	504-401	17	586-342	17		
445-521-122	19	504-410	18	586-442	17		
445-529-041	19	504-411	17	602-001	23		
445-531-061	19	504-412	18	602-002	23		
445-535-101	19	504-510K	11	604-001	23		
446-308-001	19	506-004	14	604-002	23		
446-310-001	19	506-008	15	604-003	23		
446-312-001	19	506-010	14	604-004	23		
446-315-001	19	506-012	17	604-014	23		
456-004K	10	506-013	17	604-015	23		
458-012	13	506-014	17	604-016	23		
458-012-B	13	506-025	17	604-018	23		
471-004-191	20	506-026	17	606-010	23		
471-004-311	20	506-101	17	606-014	23		
471-006-192	20	506-108	17	608-001	23		
471-006-161	20	506-114	17	608-003	23		
471-006-311	20	506-140	17	608-004	23		
471-006-351	20	506-142	17	610-001	23		
471-008-161	20	506-202K	11	610-004	23		
471-008-211	20	506-214	17	612-001	23		
471-008-351	20	506-242	17	650-050	20		
471-008-391	20	506-342	17	650-060	20		
471-010-161	20	506-345	17	650-080	20		
471-010-211	20	506-345	17	650-100	20		
471-010-312	20	506-408	15	650-120	20		
471-010-351	20	506-410	18	650-140	20		
471-010-391	20	506-412	18	650-160	20		
471-012-161	20	506-413	18	650-180	20		
471-012-211	20	506-442	17	650-200	20		
471-012-391	20	506-508K	11	714-...(-VS)	24		
471-015-131	20	506-510K	11	714-...-K	24		
471-108-163	20	506-512K	11	714-...-M(-VS)	24		
471-112-163	20	508-002-2	15	714- -MK	24		
474-508-081	20	508-012	17	716-...(-VS)	24		
474-512-121	20	508-013	17	716-...-K	24		
474-515-151	20	508-014	17	716-...-M(-VS)	24		
474-606-331	20	508-024	17	716- -MK	24		
474-608-351	20	508-025	17	718-...(-VS)	24		
474-610-351	20	508-034	17	718-...-K	24		
474-612-391	20	508-108	12	718-...-M(-VS)	24		
474-615-431	20	508-142	17	718- -MK	24		
474-618-441	20	508-144	17	734-...(-VS)	24		
502-101	17	508-215-CU	12	853-370-002(-VS)	25		
502-102	17	508-242	17	853-380-002(-VS)	25		
502-161	17	508-304	17	853-380-003(-VS)	25		
502-206K	11	508-305	17				
504-003	14	508-320-CU	12				
504-004	14	508-342	17				
504-008	15	508-345	17				
504-019	12	508-410	18				
504-045	15	508-412	18				
		508-413	18				
		508-442	17				
		508-512K	11				
		508-602-2	15				

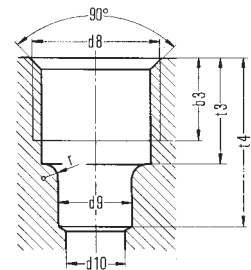
Fittings for solderless tube connections (double or single tapered rings) are primarily used for **VOGEL single-line centralized lubrication systems** (oil and grease, NLGI grades 000, 00) with pressures up to **45 bars**.

For higher pressures up to **250 bars**, like those **occurring especially in progressive centralized lubrication systems** (grease up to NLGI grade 2), it is customary to use **cutting-sleeve screw unions conforming to DIN 2353** (Page 18-20).

Counterbores – DIN 3854/DIN 3862 – for solderless tube connection

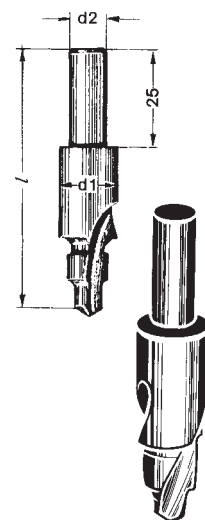
Specification for tube of counterbore diam.	d9 ^{B11}	d10	d8	b3	t3	t4	r	
1102 ¹⁾	2.5	2.5	1.5	M6x0.75	4.5	5.5	8.5	1.3
1404	4	4	3	M8x1	6.5	8.5	12.5	1.6
1406	6	6	4.5	M10x1	7	9	14	1.6
1408	8	8	6.5	M14x1.5	9	11.5	18.5	1.6
1410	10	10	8.5	M16x1.5	9	11.5	19.5	1.6
1412	12	12	10.5	M18x1.5	9.5	12	22	1.6

¹⁾ not shown in DIN standard

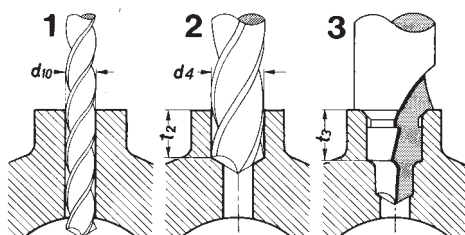


Form counterbores to tap ports for solderless tube connection

Form counterbore Order No.	tube diam.	for counterbore	l	d1	d2	Twist drill			
						d10	d4	t2	t3
902-111	2.5	1102	60.5	10	10	1.5	5	4.5	5.5
904-411	4	1404	65	10	10	3	6.5	7.5	8.5
906-411	6	1406	66	12	10	4.5	8.5	8	9
908-411	8	1408	70	16	10	6.5	12	10.5	11.5
910-411	10	1410	72	18	10	8.5	14	10.5	11.5
912-411	12	1412	75	20	10	10.5	16	11	12



Provision of counterbore

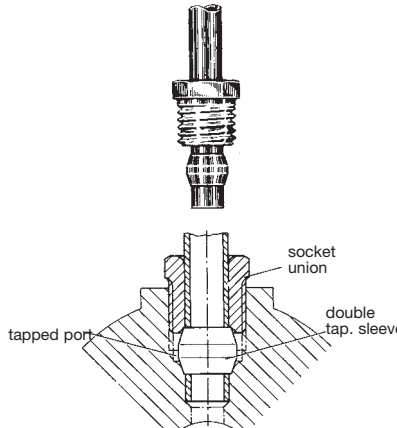


predrill holes
bore hole to be tapped
counterbore with form counterbore up to the stop

Form counterbore enlarges bore hole diam. d4 to core hole for ISO thread.

Remarks concerning operation 3
When using a hand drill, take care not to tilt the counterbore out of the drill axis. Drill steadily without interruption. Increase pressure slightly at the stop.

Connectors for steel and copper tubing



Installation (steel and copper tubing)

1. Push socket union and double tapered sleeve onto tube end.
2. Insert tube end into tapped port up to the stop
3. First tighten socket union finger-tight by hand. Then turn another 1½ turns.

Double tapered sleeves – DIN standard 3862

Order No.	for tube diam. d
402-001 *)	2.5
404-001	4
406-001	6
408-001	8
410-001	10
412-001	12

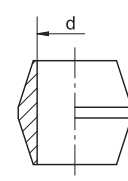
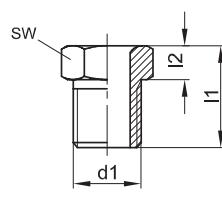
Material: brass

Socket unions – DIN standard 3871

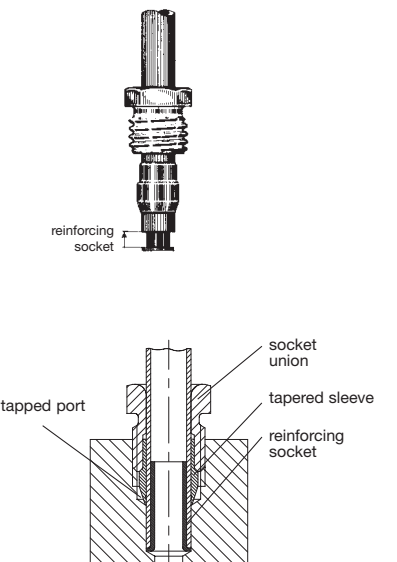
Order No.	for tube diam.	d1	l1	l2	sw
402-002 *)	2.5	M6x0.75	9	3	7
404-002	4	M8x1	12	4	8
406-002	6	M10x1	13	4	10
408-202	8	M14x1.5	16	4.5	14
410-002	10	M16x1.5	17	5.5	17
412-002	12	M18x1.5	18	6	19

Material: steel, galvanized surface

*) not shown in DIN standard

Connectors for steel, copper and plastic tubing



Installation (plastic tubing)

1. Insert reinforcing socket into plastic tube.
2. Push socket union and tapered sleeve onto tube end.
3. Insert tube end into counter-bored port up to the stop.
4. First tighten socket union finger-tight by hand. Then turn another 1½ turns.

Reinforcing sockets (if plastic tubing is used)

Order No.	for tube	d2	d3	l1
402-603	2.5x0.5	1.4	2.3	8
404-603	4x0.85	2.2	3.8	10
406-603	6x1	3.9	5.8	12
406-613	6x1.25	3.4	5.8	12
408-603	8x1.25	5.4	7.8	15
410-603	10x1.5	6.9	9.8	18
412-603	12x1.5	8.9	11.8	20

Material: brass

Tapered sleeves

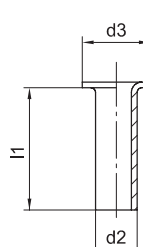
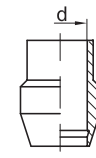
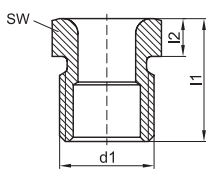
Order No.	for tube diam. d
402-611	2.5
404-611	4
406-611	6
408-611	8
410-611	10
412-611	12

Material: brass

Socket unions

Order No.	for tube diam.	d1	l1	l2	sw
402-612	2.5	M6x0.75	9	3	7
404-612	4	M8x1	12	4	8
404-612-MS *)	4	M8x1	12	4	8
406-612	6	M10x1	13	4	10
406-612-MS *)	6	M10x1	13	4	10
408-612	8	M14x1.5	16	4.5	14
408-612-MS *)	8	M14x1.5	16	4.5	14
410-612	10	M16x1.5	17	5.5	17
410-612-MS *)	10	M16x1.5	17	5.5	17
412-612	12	M18x1.5	18	6	19

Material: steel, galvanized surface
*) Material: brass

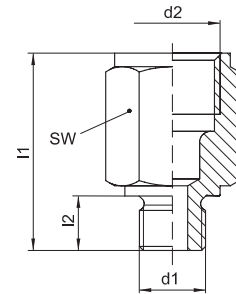
Adaptors with cylindrical thread (sealed by flat washer)

Order No.	Tube diam.	d1	d2 *)	l1	l2	SW
402-004	2.5	M6	M6x0.75	13	5.5	9
402-003	2.5	M6x0.75	M6x0.75	13	5.5	9
402-006	2.5	M8x1	M6x0.75	15	7.5	11
404-061	4	M5	M8x1	20	5.5	11
404-063	4	M8	M8x1	22	8	11
404-003	4	M8x1	M8x1	18	7.5	11
404-006	4	M10x1	M8x1	18	7.5	14
404-040	4	G 1/8 A	M8x1	18	8	14
404-162	4	M12x1	M8x1	18	9	17
404-164	4	M14x1.5	M8x1	18	9	17
406-158	6	M8x1	M10x1	23	7.5	14
406-004	6	M10x1	M10x1	18	7.5	14
406-162	6	M12x1	M10x1	19	9	17
406-054	6	G 1/4 A	M10x1	20	10	17
301-005	6	M14x1.5	M10x1	18	9	17
406-166	6	M16x1.5	M10x1	19	9	19
406-055	6	G 3/8 A	M10x1	21	10	22
408-004	8	M10x1	M14x1.5	28	7.5	17
408-154	8	G 1/8 A	M14x1.5	29	8	17
408-162	8	M12x1	M14x1.5	29	9	17
301-020	8	G 1/4 A	M14x1.5	23	10	17
301-001	8	M14x1.5	M14x1.5	26	9	17
408-005	8	M16x1.5	M14x1.5	22	9	19
408-006	8	M18x1.5	M14x1.5	22	10	22
408-022	8	M22x1.5	M14x1.5	24	12	27
410-160	10	M10x1	M16x1.5	30	7.5	19
410-162	10	M12x1	M16x1.5	31	9	19
410-163	10	G 1/4 A	M16x1.5	30	10	19
410-164	10	M14x1.5	M16x1.5	29	9	19
410-004	10	M16x1.5	M16x1.5	23	9	19
410-018	10	M18x1.5	M16x1.5	24	10	22
410-171	10	G 1/2 A	M16x1.5	24	12	27
410-022	10	M22x1.5	M16x1.5	24	12	27
412-162	12	M12x1	M18x1.5	35	9	22
412-163	12	G 1/4 A	M18x1.5	35	10	22
412-164	12	M14x1.5	M18x1.5	33	9	22
412-004	12	M18x1.5	M18x1.5	24	10	22
412-014	12	M22x1.5	M18x1.5	26	12	27

Material: steel, galvanized surface

D406-004-MS	6	M10x1	M10x1	23	7.5	14
267-001.17	6	G 1/8 A	M10x1	24	8	14
406-163	6	M12x1	M10x1	19	9	17
D301-005-MS	6	M14x1.5	M10x1	20	9	17
406-167	6	M16x1.5	M10x1	19	9	19
267-001.19	6	M18x1.5	M10x1	21	10	22
D408-004-MS	8	M10x1	M14x1.5	29	7.5	17
D301-001-MS	8	M14x1.5	M14x1.5	28	9	17
D301-020-MS	8	G 1/4 A	M14x1.5	30	10	17
267-001.13	8	G 1/2 A	M14x1.5	24	12	27

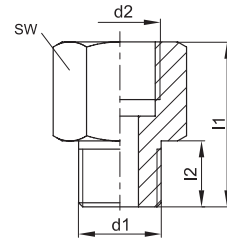
Material: brass



Reducing adaptors with cylindrical thread (sealed by flat washer)

Order No.	d1	d2	l1	l2	sw	Material
406-024	M10x1	G 1/8	20	8	14	brass, galvanized surface
401-016-312	M10x1	G 1/4	26.5	7.5	17	brass
406-044-S1 ¹⁾	M10x1 tap.	G 1/4	22.5	8	17	steel, galvanized surface
P-78.01	M12x1	G 1/4	27	8.5	19	steel, galvanized surface
401-013-161	G 1/4 A	G 1/2	40	12	27	steel, galvanized surface
401-019-352	M14x1.5	G 1/8	20	9	17	brass
401-016-371	M16x1.5	G 1/4	30	12	19	steel, galvanized surface
243-001.10	M16x1.5	G 1/2	31	9	27	steel, galvanized surface
267-001.47	G 3/8 A	G 1/4	31	10	22	brass
267-001.60	G 3/8 A	G 1/2	34	10	27	brass
267-001.36	M18x1.5	G 3/8	32	10	22	steel, galvanized surface
243-001.20	M18x1.5	G 1/2	32	10	27	steel, galvanized surface
401-019-132	G 1/2 A	G 1/8	24	12	27	brass
DZ333	G 1/2 A	G 1/4	24	12	27	brass
401-013-131	G 1/2 A	G 1/2	40.5	12	27	brass
DZ334	G 1/2 A	G 3/8	31	12	27	brass
267-001.03	G 1/2 A	G 3/4	40	12	36	brass
401-011-132	G 1/2 A	G 1	49	14	41	steel, galvanized surface
433-890-131	G 1/2 A	G 1 1/4	53	14	55	steel, black finished surface
401-013-171	G 3/4 A	G 1/2	41	16	32	steel, galvanized surface
401-013-111	G 1 A	G 1/2	29	18	41	steel, black finished surface

¹⁾ with tapered thread



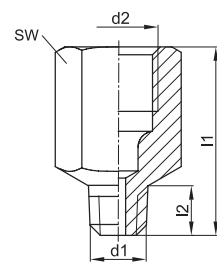
Adapters with tapered thread

Tapered threads are used **without washers**, as they are **self-sealing**.
It is not necessary to provide the ports with seal faces.

Order No.	Tube diam.	d1 ¹⁾	d2 ^{*)}	l1	l2	sw
402-003K	2.5	M6x0.75 tap.	M6x0.75	11.5	4.5	8
402-006K	2.5	M8x1 tap.	M6x0.75	15	8	9
402-008K	2.5	M10x1 tap.	M6x0.75	16	7.5	12
404-662K	4	M6 tap.	M8x1	19	5	11
404-663K	4	M6 tap.	M8x1	20	6	11
404-673K	4	M6x0.75 tap.	M8x1	20	6	11
404-047K	4	M7 tap.	M8x1	20	6	11
404-003K	4	M8x1 tap.	M8x1	17	7.4	11
404-045	4	M8x1 tap.	M8x1	62.5	7.4	11
404-006K	4	M10x1 tap.	M8x1	16	7.4	11
401-004-512	4	M10x1 tap.	M8x1	25	7.4	11
404-040K	4	R 1/8 tap.	M8x1	16	6	11
404-054K	4	R 1/4 tap.	M8x1	14	9	14
406-004K	6	M10x1 tap.	M10x1	23	7.4	14
301-105K	6	M12x1 tap.	M10x1	18	7.4	14
456-004K	6	R 1/8 tap.	M10x1	21	6	14
406-054K	6	R 1/4 tap.	M10x1	20	9	17

Material: steel, galvanized surface

¹⁾ Tapered thread according to DIN 158, short, resp. according to DIN 2999.



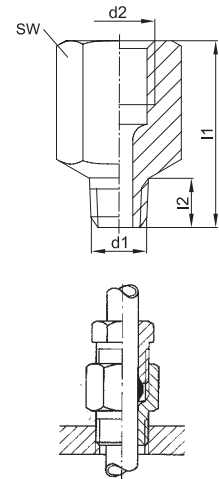
^{*)} Ports tapped for solderless tube connection

Bulkhead connectors with tapered thread for sealed tube passage through a wall without tube interruption

Order No.	Tube diam.	d1 1)	d2 *)	l1	l2	sw
404-003DK	4	M8x1 tap.	M8x1	17	7.4	11
404-006DK	4	M10x1 tap.	M8x1	16	7.4	11
406-004DK	6	M10x1 tap.	M10x1	18	7.4	14
301-001DK	8	M14x1.5 tap.	M14x1.5	24	11	17
410-004DK	10	M16x1.5 tap.	M16x1.5	24	11	19

Material: steel, galvanized surface

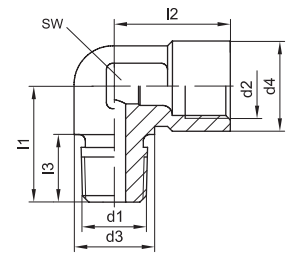
1) Tapered thread according to DIN 158. short.



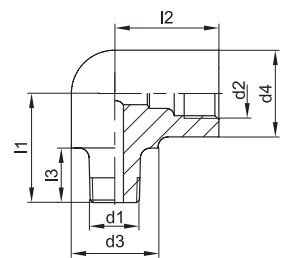
Elbows with tapered thread

Order No.	Tube diam.	d1 1)	d2 *)	d3	d	l1	l2	l3	sw
504-510K	4	M10x1 tap.	M8x1	13	13	21	16	10	14
514-018K	4	R 1/8 tap.	M8x1	13	13	21	16	10	14
506-508K	6	M8x1 tap.	M10x1	12.5	14	18	18	10.5	14
506-510K	6	M10x1 tap.	M10x1	12.5	14	18	18	10.5	14
506-512K	6	M12x1 tap.	M10x1	12.5	14	18	18	10.5	14
508-512K	8	M12x1 tap.	M14x1.5	14	19.5	19.5	24	10	14

Material: die-cast zinc



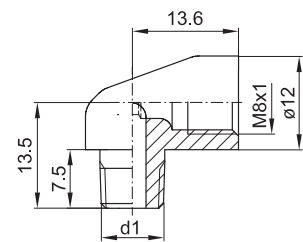
Order No.	Tube diam.	d1 1)	d2 *)	d3	d4	l1	l2	l3	Material
502-206K	2.5	M6 tap.	M6x0.75	-	8	10	9.5	6	steel
506-202K	6	M10x1 tap.	M10x1	17	17	22	21	11	brass
403-006-651	6	R 1/4 tap.	M10x1	14	14	17	17.5	8.5	steel



Order No.	Tube diam.	d1 1)
504-200K	4	M6 tap.
504-201K	4	M8x1 tap.
504-202K	4	M10x1 tap.
504-203K	4	M6x0.75 tap.

Material: brass

1) Tapered thread according to DIN 158. short, resp. according to DIN 2999.



Dimensions in mm

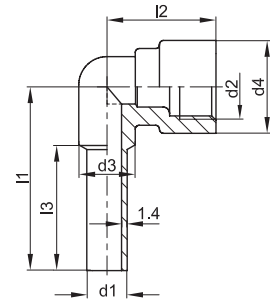
*) Ports tapped for solderless tube connection

Elbows with tube end for installation in counterbores as per DIN 3854/DIN 3862

Order No.	Tube diam.	d1	d2 *)	d3	d4	l1	l2	l3
DY958	6	6	M10x1	8	14	30.8	21	22
DY960	8	8	M14x1.5	11	18	37	24.5	27
DY961	10	10	M16x1.5	15	23	42.5	26.5	29
DY962	12	12	M18x1.5	15	23	46	26.5	32

Material: brass

Tube end for tube connection



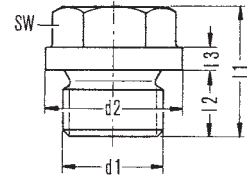
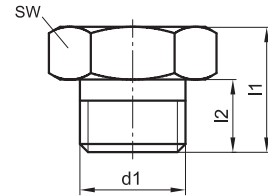
Screw plugs

Order No.	d1	l1	l2	sw
402-011	M6x0.75	9	5	9
404-011	M8x1	10	6	11
406-011	M10x1	12	7	12
408-211	M12x1	12	7	17
408-011	M14x1.5	12	7	17
410-011	M16x1.5	14	8	19
412-011	M18x1.5	15	10	22

Material: steel, galvanized surface

Order No.	d1	d2	l1	l2	l3	sw
DIN910-R1-8-5.8	G 1/8 A	14	17	8	3	11
DIN910-R1-4x8-5.8	G 1/4 A	18	17	8	3	14
DIN910-R3-8-5.8	G 3/8 A	22	21	12	3	17
DIN910-R1-2-5.8	G 1/2 A	26	26	14	4	19
DIN910-R3-4-5.8	G 3/4 A	32	30	16	4	24
DIN910-R1-5.8	G 1 A	39	32	16	5	27

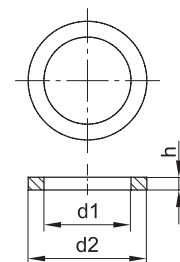
Material: steel, galvanized surface



Flat washers

Order No.	d1	d2	h	Suitable for thread
				mm inches
DIN7603-A6x10-CU	6.2	9.9	1	M6 -
DIN7603-A8x11.5-CU	8.2	11.4	1	M8 -
504-019	10.2	13.9	1	M10 G 1/8
508-215-CU	12.2	15.9	1.4	M12 -
508-320-CU	12.2	15.9	2	M12 -
DIN7603-A14x18-CU	14.2	17.9	1.5	M14 -
508-108	13.3	17.9	1.5	- G 1/4
DIN7603-A16x20-CU	16.2	19.9	1.5	M16 -
DIN7603-A17x21-CU	17.2	20.9	1.5	- G 3/8
DIN7603-A18x22-CU	18.2	21.9	1.5	M18 -
DIN7603-A20x24-CU	20.2	23.9	1.5	M20 -
DIN7603-A21x26-CU	21.2	25.9	1.5	- G 1/2
DIN7603-A22x27-CU	22.2	26.9	1.5	M22 -

Material: copper

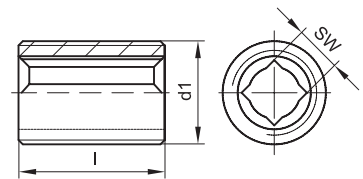


*) Ports tapped for solderless tube connection

Threaded sockets

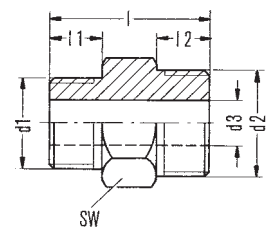
Order No.	d1	l	sw
404-203	M8x1	13	3.5
406-203	M10x1	15	3.5
458-012	M12x1	17	5.5
458-012-B ¹⁾	M12x1	17	5.5
408-023	M14x1.5	18	5.5
410-003	M16x1.5	19	7
410-003-B ¹⁾	M16x1.5	19	7
408-033-S3	G 1/4 A	15	5.5

Material: steel ¹⁾ Coated with micro-encapsulated adhesive



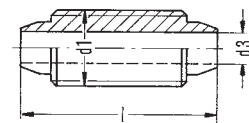
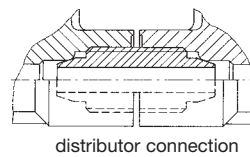
Order No.	d1	d2	d3	l	l1	l2	sw
406-103	M10x1	M12x1	5	20	6	7	14
408-103	M12x1	M14x1.5	6	21	7	7	17

Material: steel, galvanized surface



Order No.	d1	d3	l
406-233	M10x1	4	26

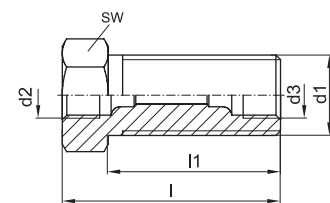
Material: brass



Connectors, tube to tube

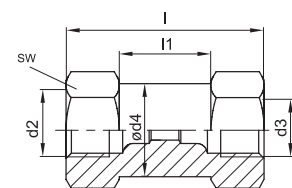
Order No.	Tube diam.	d1	d2 *)	d3 *)	l	l1	sw
404-008	4	M14x1.5	M8x1	M8x1	27	19	17
404-009	4	M14x1.5	M8x1	M8x1	38	30	17
406-008	6	M14x1.5	M10x1	M10x1	30	20	17
406-005	6 and 8	M16x1.5	M14x1.5	M10x1	35	23	19
408-008	8	M20x1.5	M14x1.5	M14x1.5	40	28	24
410-008	10	M20x1.5	M16x1.5	M16x1.5	42	27	24
412-008	12	M24x1.5	M18x1.5	M18x1.5	48	33	27

Material: steel, galvanized surface



Order No.	Tube diam.	d2 *)	d3 *)	ød4	l	l1	sw
404-010	4	M8x1	M8x1	10.8	27	13	11
406-010	6	M10x1	M10x1	13.8	30	10	14
406-805	6 and 8	M14x1.5	M10x1	16.8	35	11	17
408-010	8	M14x1.5	M14x1.5	16.8	40	14	17
410-010	10	M16x1.5	M16x1.5	18.8	42	13	19
412-010	12	M18x1.5	M18x1.5	21.8	48	18	22

Material: steel, galvanized surface

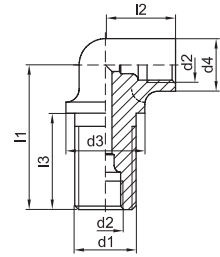


Dimensions in mm

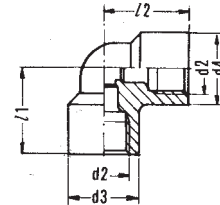
^{*)} Ports tapped for solderless tube connection

Elbow connectors

Order No.	Tube diam.	d1	d2 *)	d3	d4	l1	l2	l3	Material
504-003	4	M14x1.5	M8x1	18	12	33	16	22	die-cast zinc
504-103	4	M14x1.5	M8x1	18	12	33	18	22	brass
506-004	6	M14x1.5	M10x1	16.5	14	27	17.5	15	brass

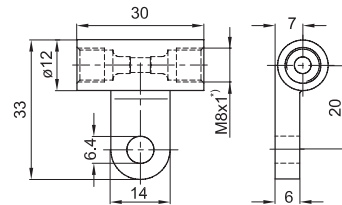


Order No.	Tube diam.	d2 *)	d3	d4	l1	l2	Material
408-013	8	M14x1.5	20	20	23.5	23.5	die-cast zinc
410-013	10	M16x1.5	21	21	26	26	die-cast zinc

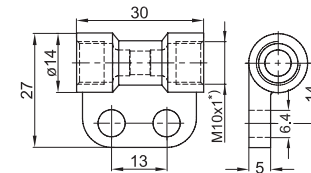


Bracketed connectors

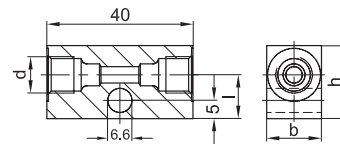
Order No.	Tube diam.	Material
504-004	4	die-cast zinc



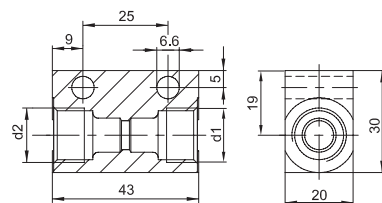
Order No.	Tube diam.	Material
506-010	6	brass



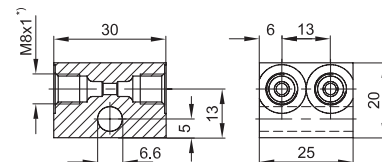
Order No.	Tube diam.	d *)	b	h	l	Material
DAR506	6	M10x1	15	20	12	aluminum
DAR508	8	M14x1.5	20	25	15	



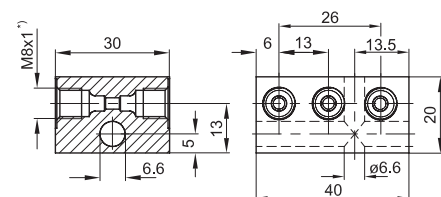
Order No.	Tube diam.	d1 *)	d2 *)	Material
DAR510	10	M16x1.5	M16x1.5	steel,
DAR510-S1	8 and 10	M14x1.5	M16x1.5	galvanized surface



Order No.	Tube diam.	Material
DAR524	4	steel, galvanized surface



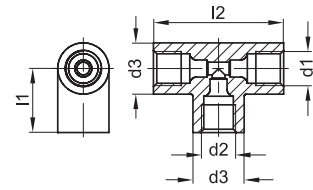
Order No.	Tube diam.	Material
DAR534	4	steel, galvanized surface



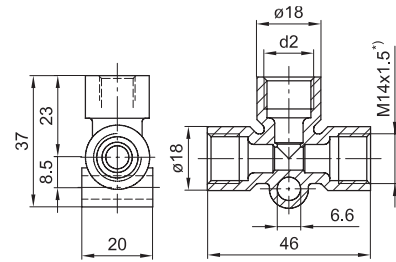
*) Ports tapped for solderless tube connection

Tee connectors

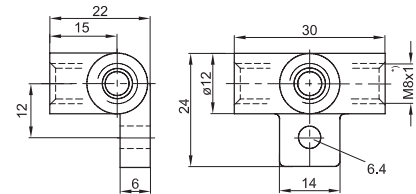
Order No.	Tube diam.	d 1 *)	d 2 *)	d 3	l 1	l 2	Material
504-008	4	M8x1	M8x1	12	15	30.5	die-cast zinc
506-408	6 and 4	M10x1	M8x1	14	18	36	
506-008	6	M10x1	M10x1	14	18	36	
510-102	10	M16x1.5	M16x1.5	20	25	50	



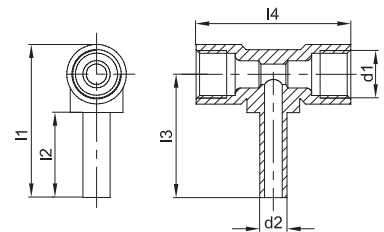
Order No.	Tube diam.	d 2 *)	Material
508-602-2	8 and 6	M10x1	die-cast zinc
508-002-2	8	M14x1.5	



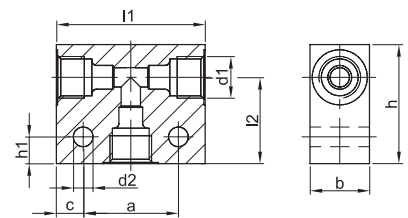
Order No.	Tube diam.	Material
504-045	4	die-cast zinc



Order No.	Tube diam.	d 1 *)	d 2	l 1	l 2	l 3	l 4	Material
DY964	6	M10x1	6	40	22	32	37	brass
DY966	8	M14x1.5	8	45	25	36	46	

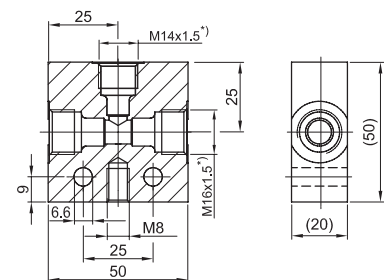


Order No.	Tube diam.	d 1 *)	d 2	a	b	c	h	h 1	l 1	l 2	Material
DAT506	6	M10x1	6.6	22	20	9	30	9	40	20	aluminum
DAT508	8	M14x1.5	6.6	32	20	9	40	9	50	29	aluminum
DAT510	10	M16x1.5	7	25	20	13.5	40	15	52	29	steel 1)
DAT512	12	M18x1.5	6.6	42	25	9	40	9	60	29	aluminum



1) galvanized surface

Order No.	Tube diam.	Material
DAT510-S1	8 (1x) 10 (2x)	steel, galvanized surface



Dimensions in mm

*) Ports tapped for solderless tube connection

Cross joints

Order No.	Tube diam.	d1 *)	a	b	h	l1	l2	Material
DAK506	6	M10x1	22	20	40	40	20	aluminum
DAK508	8	M14x1.5	32	20	50	50	25	
DAK512	12	M18x1.5	42	25	60	60	30	

Order No.	Tube diam.	d1 *)	Material
DAK510-S1	10	M16x1.5	steel, galvanized surface

Distributor manifolds

Order No.	Number of ports	Main tube port diam.	d1 *)	d2	d3	l	l1	h	h1	b	t
321-661	1	6	M10x1	M10x1	-	41	-	20	11	18	-
322-541	2	4	M8x1	2x M8x1	-	49	-	17	10.5	13	13
322-561	2	6	M10x1	2x M8x1	-	52	-	17	10.5	13	13
322-581	2	8	M14x1.5	2x M8x1	-	61	-	20	11	18	13
322-661	2	6	M10x1	2x M10x1	-	58	-	20	11	18	17
322-661-S1	2	8	M14x1.5	2x M10x1	-	72	-	20	11	18	22
323-541	3	4	M8x1	3x M8x1	-	62	-	17	10.5	13	13
323-561	3	6	M10x1	3x M8x1	-	65	-	17	10.5	13	13
323-581	3	8	M14x1.5	3x M8x1	-	74	-	20	11	18	13
323-661	3	6	M10x1	3x M10x1	-	75	-	20	11	18	17
323-661-S1	3	8	M14x1.5	3x M10x1	-	94	-	20	11	18	22
324-561	4	6	M10x1	4x M8x1	-	78	-	17	10.5	13	13
324-581	4	8	M14x1.5	4x M8x1	-	87	-	20	11	18	13
324-761	4	6	M10x1	4x M10x1	-	92	34	20	11	18	17
324-861	4	6	M10x1	2x M10x1	2x M10x1	58	-	20	11	18	17
325-565	5	6	M10x1	5x M8x1	-	91	-	17	10.5	13	13
325-861	5	6	M10x1	5x M10x1	-	109	51	20	11	18	17
326-581	6	8	M14x1.5	6x M8x1	-	113	39	20	11	18	13
326-661	6	6	M10x1	6x M10x1	-	126	68	20	11	18	17
326-663	6	6	M10x1	3x M10x1	3x M10x1	75	17	20	11	18	17
327-761	7	6	M10x1	7x M10x1	-	143	85	20	11	18	17
328-561	8	6	M10x1	8x M8x1	-	130	52	17	10.5	13	13
328-581	8	8	M14x1.5	8x M8x1	-	139	65	20	11	18	13
328-761	8	6	M10x1	8x M10x1	-	160	102	20	11	18	17
328-861	8	6	M10x1	4x M10x1	4x M10x1	92	34	20	11	18	17
329-761	9	6	M10x1	9x M10x1	-	177	119	20	11	18	17
329-561	10	6	M10x1	10x M8x1	-	156	78	17	10.5	13	13
330-581-S1	10	8	M14x1.5	10x M8x1	-	201	85	20	11	18	17
330-761	10	6	M10x1	10x M10x1	-	194	136	20	11	18	17
330-861	10	6	M10x1	5x M10x1	5x M10x1	109	51	20	11	18	17
331-761	11	6	M10x1	11x M10x1	-	211	153	20	11	18	17
332-761	12	6	M10x1	12x M10x1	-	228	170	20	11	18	17
332-861	12	6	M10x1	6x M10x1	6x M10x1	126	68	20	11	18	17
334-861	14	6	M10x1	7x M10x1	7x M10x1	143	85	20	11	18	17
336-861	16	6	M10x1	8x M10x1	8x M10x1	160	102	20	11	18	17
338-861	18	6	M10x1	9x M10x1	9x M10x1	177	119	20	11	18	17
340-861	20	6	M10x1	10x M10x1	10x M10x1	194	136	20	11	18	17
342-861	22	6	M10x1	11x M10x1	11x M10x1	211	153	20	11	18	17
344-861	24	6	M10x1	12x M10x1	12x M10x1	228	170	20	11	18	17

Material: aluminum alloy

*) Ports tapped for solderless tube connection

Banjo fittings

Elbow				Order No. of single parts						
Order No.	Tube diam.	d1	d2 *)	l1	l2	l3	l4	sw	Banjo bolt	Banjo union
502-161 1)	2.5	M6	M6x0.75	20	13	19	4.5	9	502-056	502-051
504-161 1)	4	M6	M8x1	20	17	24	4.1	9	502-056	504-651
502-101 1)	2.5	M6x0.75	M6x0.75	18	13	19	5	9	502-053	502-051
504-162 1)	4	M6x0.75	M8x1	18	17	24	4.5	9	502-053	504-651
504-411 1)	4	M8	M8x1	23	18	25	7.5	11	502-154	504-851
502-102 1)	2.5	M8x1	M6x0.75	20	14	21	6.5	11	502-054	502-052
504-101	4	M8x1	M8x1	26	18	25	6.5	11	504-073	504-072
504-401 1)	4	M8x1	M8x1	20	18	25	7	11	502-054	504-851
504-102	4	M10x1	M8x1	26	19	27.5	6.5	14	504-054	504-052
506-140	6	M10x1	M10x1	26	21	28.5	6.5	14	504-054	506-033
504-108	4	G 1/8 A	M8x1	27	19	27.5	6.8	14	504-027	504-052
506-108	6	G 1/8 A	M10x1	27	21	28.5	7	14	504-027	506-033
506-142	6	M12x1	M10x1	34	25	35.2	7.5	17	558-012	506-030
508-142	8	M12x1	M14x1.5	34	27	37	7.5	17	558-012	508-030
506-012	6	M14x1.5	M10x1	34	25	35.2	7.5	17	508-006	506-005
508-144	8	M14x1.5	M14x1.5	34	27	37	7.5	17	508-006	508-007
506-214	6	G 1/4 A	M10x1	35	25	35.2	8.5	17	508-023	506-005
508-024	8	G 1/4 A	M14x1.5	35	27	37	8.5	17	508-023	508-007
510-024	10	G 1/4 A	M16x1.5	35	30	40	7.5	17	508-023	510-023
510-142	10	M12x1	M16x1.5	34	30	40	7.5	17	558-012	510-041
510-145	10	M16x1.5	M16x1.5	35	30	41	10.7	19	510-017	510-044

1) Miniature design, banjo union of steel

L-type

Order No.	Tube diam.	d1	d2 *)	d3 *)	l1	l2	l3	l4	sw	Banjo bolt	Banjo union
504-114	4	M8x1	M8x1	M8x1	31	18	25.5	6.5	11	504-075	504-072
504-115	4	M10x1	M8x1	M8x1	31	19	27.5	6.5	14	504-056	504-052
504-105	4 a. 6	M10x1	M8x1	M10x1	33	19	27.5	6.5	14	506-006	504-052
405-619-061	4 a. 6	G 1/8 A	M8x1	M10x1	33	19	27.5	6.3	14	402-606-191	504-052
506-114	6	M10x1	M10x1	M10x1	33	21	28.5	6.3	14	506-006	506-033
506-342	6	M12x1	M10x1	M10x1	38	25	35.2	7.5	17	558-612	506-030
586-342	6 a. 8	M12x1	M10x1	M14x1.5	44	25	35.2	7.5	17	558-812	506-030
588-342	8 a. 6	M12x1	M14x1.5	M10x1	38	27	37	7.5	17	558-612	508-030
508-342	8	M12x1	M14x1.5	M14x1.5	44	27	37	7.5	17	558-812	508-030
508-034	8	G 1/4 A	M14x1.5	M14x1.5	44	27	37	7.5	17	508-033	508-007
506-101	6	M14x1.5	M10x1	M10x1	40	25	35.2	7.5	17	508-303	506-005
506-013	6 a. 8	M14x1.5	M10x1	M14x1.5	43	25	35.2	7.5	17	508-008	506-005
508-304	8 a. 6	M14x1.5	M14x1.5	M10x1	40	27	37	7.5	17	508-303	508-007
508-012	8	M14x1.5	M14x1.5	M14x1.5	43	27	37	7.5	17	508-008	508-007
506-345	6 a.10	M12x1	M10x1	M16x1.5	48.5	25	35	7.7	19	558-912	506-030
508-345	8 a.10	M12x1	M14x1.5	M16x1.5	48.5	27	37	7.7	19	558-912	508-030
510-341	10 a.8	M12x1	M16x1.5	M14x1.5	44	30	40	7.5	17	558-812	510-041
510-342	10	M12x1	M16x1.5	M16x1.5	48.5	30	40	7.5	19	558-912	510-041
510-343	10	G 1/4 A	M16x1.5	M16x1.5	48.5	30	40	7.5	19	558-913	510-023

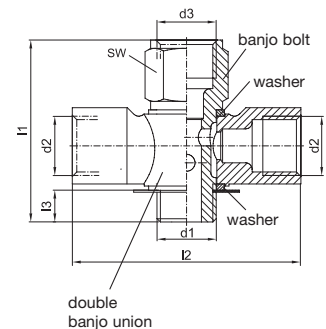
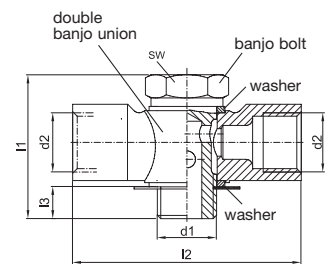
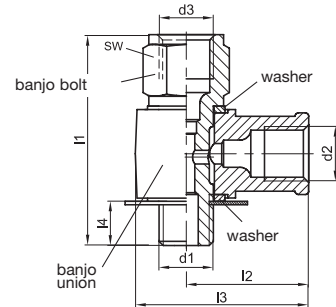
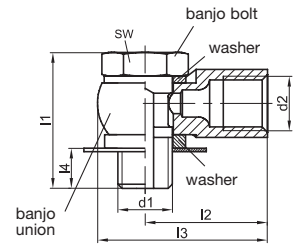
Tee

Order No.	Tube diam.	d1	d2 *)	l1	l2	l3	sw	Banjo bolt	Banjo union
504-109	4	M8x1	M8x1	26	38	6.5	11	504-073	504-071
504-112	4	M10x1	M8x1	26	38	6.5	14	504-054	504-051
506-242	6	M12x1	M10x1	34	48	7.5	17	558-012	506-032
508-242	8	M12x1	M14x1.5	34	54	7.5	17	558-012	508-032
506-025	6	M14x1.5	M10x1	34	48	7.5	17	508-006	506-007
508-013	8	M14x1.5	M14x1.5	34	54	7.5	17	508-006	508-005
508-025	8	G 1/4 A	M14x1.5	35	54	7.5	17	508-023	508-005
510-242	10	M12x1	M16x1.5	34	60	7.5	17	558-012	510-042

Cross

Order No.	Tube diam.	d1	d2 *)	d3 *)	l1	l2	l3	sw	Banjo bolt	Banjo union
504-110	4	M8x1	M8x1	M8x1	31	38	6.5	11	504-075	504-071
504-111	4	M10x1	M8x1	M8x1	31	38	6.5	14	504-056	504-051
504-106	4 a. 6	M10x1	M8x1	M10x1	33	38	6.5	14	506-006	504-051
506-442	6	M12x1	M10x1	M10x1	38	48	7.5	17	558-612	506-032
586-442	6 a. 8	M12x1	M10x1	M14x1.5	44	48	7.5	17	558-812	506-032
568-442	8 a. 6	M12x1	M14x1.5	M10x1	38	54	7.5	17	558-612	508-032
508-442	8	M12x1	M14x1.5	M14x1.5	44	54	7.5	17	558-812	508-032
506-014	6	M14x1.5	M10x1	M10x1	40	48	7.5	17	508-303	506-007
506-026	6 a. 8	M14x1.5	M10x1	M14x1.5	43	48	7.5	17	508-008	506-007
508-305	8 a. 6	M14x1.5	M14x1.5	M10x1	40	54	7.5	17	508-303	508-005
508-014	8	M14x1.5	M14x1.5	M14x1.5	43	54	7.5	17	508-008	508-005
510-442	10	M12x1	M16x1.5	M16x1.5	48.5	60	7.5	19	558-912	510-042

Material: **banjo bolt**: steel, galvanized surface; **(double) banjo union**: die-cast zinc
sw = width across flats



Dimensions in mm

*) Ports tapped for solderless tube connection

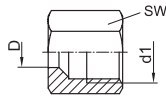
Cutting sleeve screw unions acc. to DIN 2353

Cutting sleeves



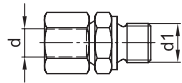
Order No.	D (tube diam.)
406-331 ¹⁾	6
406-301	6
408-301	8
410-301	10
412-301	12

Union nuts



Order No.	D (tube diam.)	d1	sw
406-332 ¹⁾	6	M10x1	12
406-302	6	M12x1.5	14
408-302	8	M14x1.5	17
410-302	10	M16x1.5	19
412-302	12	M18x1.5	22

Straight screw-in connectors

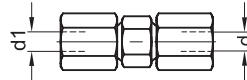


The cutting sleeve screw unions shown correspond to the L-series.

¹⁾ Compact type, LL-series.

Order No.	Tube diam. d	d1
404-413	4	M8x1 tap.
404-403	4	M10x1 tap.
406-403	6	M10x1
406-413	6	M14x1.5
406-463W	6	G 3/8 A
408-413	8	M14x1.5
410-403	10	M14x1.5
410-413	10	M16x1.5
410-463	10	M18x1.5
412-423	12	M14x1.5
412-403	12	M16x1.5
412-453	12	M18x1.5
415-403	15	M18x1.5
418-403	18	M22x1.5
406-443 ¹⁾	6	M6 tap.
406-433 ¹⁾	6	M8x1 tap.
406-423 ¹⁾	6	M10x1 tap.
441-008-511 ¹⁾	8	M10x1 tap.
410-443	10	M10x1 tap.
404-403W ¹⁾	4	R 1/8 tap.
408-423W ¹⁾	8	R 1/8 tap.
415-423W	15	R 3/8 tap.
406-403W	6	G 1/8 A
408-403W	8	G 1/4 A
408-413W	8	G 3/8 A
408-453W	8	G 1/2 A
410-403W	10	G 1/4 A
410-413W	10	G 3/8 A
410-433W	10	G 1/2 A
410-443W	10	R 1/8 tap.
412-423W	12	G 1/4 A
412-403W	12	G 3/8 A
412-433	12	M18x1.5
412-453W	12	G 1/2 A
415-403W	15	G 1/2 A
415-433W	15	G 3/8 A
415-443W	15	G 3/4 A
418-403W	18	G 1/2 A
441-015-171	15	G 3/4 A
441-022-171	22	G 3/4 A

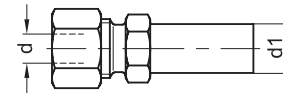
Straight connectors (tube to tube)



Reducing connectors

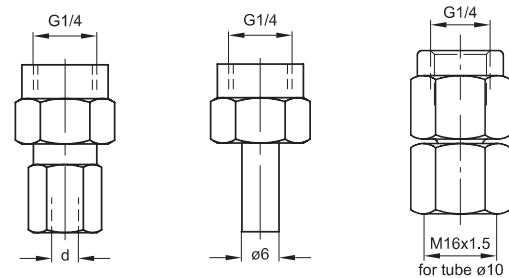
Order No.	Tube diam. d, d1	Order No.	Tube diam. d	Tube diam. d1
404-404 ¹⁾	4	504-410	6	4
406-406	6	504-412	8	4
408-408	8	506-410	8	6
410-410	10	506-412	10	6
412-412	12	508-410	10	8
415-415	15	506-413	12	6
418-418	18	508-412	12	8
		510-410	12	10
		508-413	15	8
		510-412	15	10
		512-410	15	12
		510-413	18	10
		512-412	18	12
		515-410	18	15

Reducing connectors



Order No.	Tube diam. d	ø d1
408-406	6	8
410-406	6	10
443-706-121	6	12
443-706-151	6	15
443-706-181	6	18
410-408	8	10
443-708-121	8	12
443-708-151	8	15
443-708-181	8	18
412-410	10	12
415-410	10	15
443-710-181	10	18
443-712-151	12	15
418-412	12	18
422-412	12	22
443-715-181	15	18

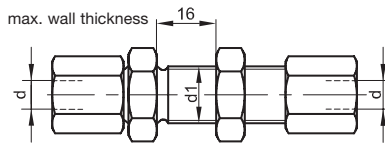
Connectors for pressure gauges



Order No.	Tube diam. d	Order No.	Order No.
406-411	6	248-610.01	
408-411	8		
410-411	10		441-110-163
412-411	12		

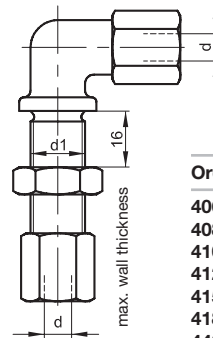
Cutting sleeve screw unions acc. to DIN 2353

Straight bulkhead connectors



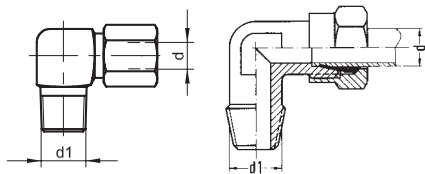
Order No.	Tube diam. d	ø d1
406-416	6	12.5
408-416	8	14.5
410-416	10	16.5
412-416	12	18.5
415-416	15	22.5
418-416	18	26.5
422-416	22	30.5

Elbow bulkhead connectors



Order No.	Tube diam. d	ø d1
406-409	6	12.5
408-409	8	14.5
410-409	10	16.5
412-409	12	18.5
415-409	15	22.5
418-409	18	26.5
443-190-901	22	30.5

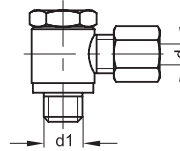
Elbow screw-in connectors



Order No.	Tube diam. d	d1
404-425 ¹⁾	4	M10x1 tap.
406-445 ¹⁾	6	M6 tap.
406-435 ¹⁾	6	M8x1 tap.
406-425 ¹⁾	6	M10x1 tap.
406-405	6	M10x1 tap.
410-405	10	M14x1.5 tap.
410-425	10	M16x1.5 tap.
412-405	12	M16x1.5 tap.
415-405	15	M18x1.5 tap.
406-405W	6	R 1/8 tap.
406-515W	6	R 1/4 tap.
408-425W	8	R 1/8 tap.
408-405W	8	R 1/4 tap.
410-405W	10	R 1/4 tap.
412-405W	12	R 3/8 tap.
415-405W	15	R 1/2 tap.
418-405W	18	R 1/2 tap.

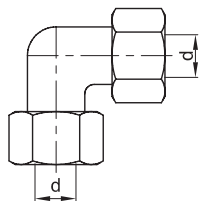
¹⁾ Compact type, LL-series.

Banjo fittings



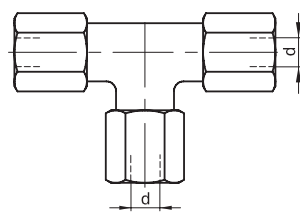
Order No.	Tube diam. d	d1
445-529-041	4	M8x1
445-519-061	6	G 1/8 A
445-531-061	6	M10x1
445-516-061	6	G 1/4 A
445-516-081	8	G 1/4 A
445-516-101	10	G 1/4 A
445-535-101	10	M14x1.5
445-521-122	12	G 3/8 A
445-513-181	18	G 1/2 A
445-517-222	22	G 3/4 A

Elbow connectors (tube to tube)



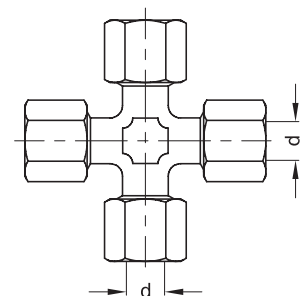
Order No.	Tube diam. d
443-215-001	15
443-218-001	18
443-290-001	22

Tee-connectors



Order No.	Tube diam. d
406-407	6
408-407	8
410-407	10
412-407	12
415-407	15
418-407	18
422-407	22

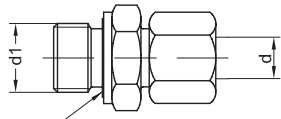
Four-way connectors



Order No.	d
446-308-001	8
446-310-001	10
446-312-001	12
446-315-001	15

Cutting-sleeve screw unions with Eolastic washer and EO2 function nut

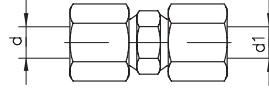
Straight screw-in connectors with Eolastic washer and EO2 function nut



EOLASTIC washer

Order No.	Tube diam. d	d1
471-004-191	4	G 1/8 A
471-004-311	4	M10x1
471-006-192	6	G 1/8 A
471-006-161	6	G 1/4 A
471-006-311	6	M10x1
471-006-351	6	M14x1.5
471-008-161	8	G 1/4 A
471-008-211	8	G 3/8 A
471-008-351	8	M14x1.5
471-008-391	8	M18x1.5
471-010-161	10	G 1/4 A
471-010-211	10	G 3/8 A
471-010-312	10	M10x1
471-010-351	10	M14x1.5
471-010-391	10	M18x1.5
471-012-161	12	G 1/4 A
471-012-211	12	G 3/8 A
471-012-391	12	M18x1.5
471-015-131	15	G 1/2 A

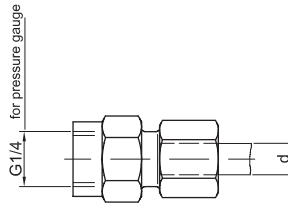
Straight connectors (tube to tube) with EO2 function nut



Order No.	Tube diam. d	d1
474-508-081	8	
474-512-121	12	
474-515-151	15	

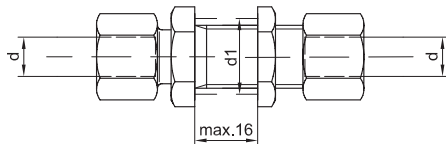
Max. operating pressure 315 bars

Connectors for pressure gauges with EO2 function nut



Order No.	Tube diam. d
441-106-162	6
471-108-163	8
471-112-163	12

Straight bulkhead connectors with EO2 function nut

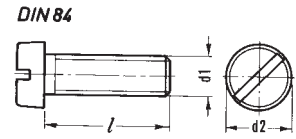


Order No.	Tube diam. d	d1
474-606-331	6	12.5
474-608-351	8	14.5
474-610-351	10	16.5
474-612-391	12	18.5
474-615-431	15	22.5
474-618-441	18	26.5

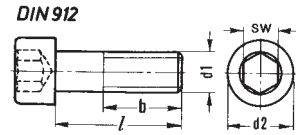
Max. operating pressure 315 bars

Fixing bolts

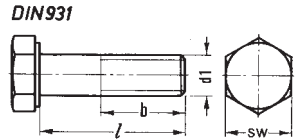
Order No.	d1	l	d2
DIN84-M3x5-4.8	M3	5	5.5
DIN84-M5x8-4.8	M5	8	8.5
DIN84-M5x16-4.8	M5	16	8.5
DIN84-M5x20-4.8	M5	20	8.5
DIN84-M6x16-4.8	M6	16	10
DIN84-M6x20-4.8	M6	20	10
DIN84-M6x25-4.8	M6	25	10



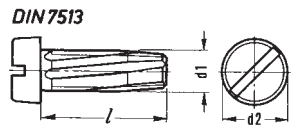
Order No.	d1	l	d2	b	sw
DIN912-M4x20-8.8	M4	20	7	14	3
DIN912-M6x16-8.8	M6	16	10	18	5
DIN912-M6x25-8.8	M6	25	10	18	5
DIN912-M6x60-8.8	M6	60	10	18	5
DIN912-M8x16-8.8	M8	16	13	12	6



Order No.	d1	l	b	sw
DIN931-M6x30-5.8	M6	30	18	10



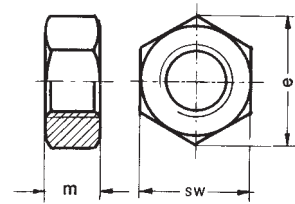
Order No.	d1	l	d2
DIN7513-BM4x20	M4	20	7
DIN7513-BM4x25	M4	25	7
DIN7513-BM5x10	M5	10	8.5
DIN7513-BM6x16	M6	16	10
DIN7513-BM6x25	M6	25	10



Material: Steel

Nuts

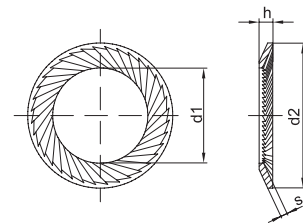
Order No.	Thread	m	sw	e
DIN934-M5-8	M5	4	8	9.2
DIN934-M6-8	M6	5	10	11.5
DIN936-M14x1.5-5	M14x1.5	8	22	25.4
DIN936-M16x1.5-5	M16x1.5	8	24	27.7
DIN936-M20x1.5-5	M20x1.5	9	30	34.6



Material: Steel

Lock washers

Order No.	for bolt	d1	d2	s	h
650-050	M5	5.3	9	0.6	0.9
650-060	M6	6.4	10	0.7	0.9
650-080	M8	8.4	13	0.8	1.2
650-100	M10	10.5	16	1	1.5
650-120	M12	13	18	1.1	1.5
650-140	M14	15	22	1.2	1.8
650-160	M16	17	24	1.3	1.9
650-180	M18	19	27	1.5	2.2
650-200	M20	21	30	1.5	2.2



Material: Spring steel

Dimensions in mm

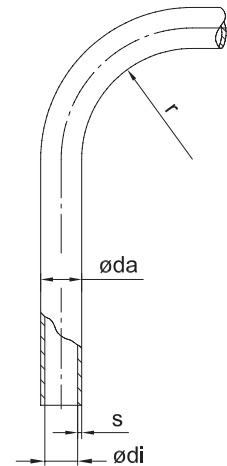
Steel and plastic tubing

Steel tubing

Order No.	ø da ±0.05	s ±0.03	Minimum bending radius r		Design pressure [bars]	Burst press. [bars]
			bent with mandrel	bent with grooved disk		
WV-RO2.5x0.5 VERZI	2.5	0.5	5	–	580	1410
WV-RO4x0.7 VERZI	4	0.7	8	7	500	1220
WV-RO6x0.7 VERZI	6	0.7	25	12	320	850
WV-RO6x1 VERZI	6	1	25	12	500	1250
WV-RO8x0.7 VERZI	8	0.7	46	19	230	675
WV-RO8x1 VERZI	8	1	46	19	340	840
WV-RO10x1 VERZI	10 *)	1	76	27	270	660

*) ø da ±0.07

VERZI = 25 µm galvanization - yellow passivated. Length delivered 5 m. Stainless steel tubing on request.



Plastic tubing: **WVN715, without plasticizer**
WVN716, flexible (containing plasticizer)

Order No. 1)	ø da	s	ø di +0.15 -0.05	Smallest permissible bending radius r bent		Perm. operating press. 3) [bars]	Burst press. [bars]
				free-hand	with fixture 2)		
WVN715-RO2.5x0.5	2.5	0.5	1.5	25	9	66	198
WVN715-RO4x0.85	4	0.85	2.3	38	14	72	216
WVN715-RO6x1	6 ±0.1	1	4	63	21	53	159
WVN715-RO6x1.25	6	1.25	3.5	63	21	70	210
WVN715-RO8x1.25	8	1.25	5.5	76	28	49	147
WVN715-RO10x1.5	10	1.5	7	89	35	47	141
WVN715-RO12x1	12 ±0.15	1	10	110	45	24	72
WVN715-RO12x1.5	12	1.5	9	110	45	38	114
WVN716-RO4x0.85	4	0.85	2.3	38	14	36	108
WVN716-RO6x1.25	6 ±0.1	1.25	3.5	63	21	35	105
WVN716-RO8x1.25	8	1.25	5.5	80	30	25	75

Color: natural colors, black lettering. Tubing available in green, red, black or brown on request.

Tubing with other dimensions or also filled with NLGI grade 2 grease or fluid grease on request.

Important!

For screwed tubing joints only use unions **with reinforcing sockets**.

Material WVN715: optionally polyamide 11 (PA 11) without plasticizer or polyamide 12 (PA 12) without plasticizer to DIN 73378.

PA 12 H: polyamide 12 without plasticizer, stabilized against thermal ageing.

(black tubing) PA 12 HL: polyamide 12 without plasticizer, stabilized against light-related and thermal ageing.

Material WVN716: optionally polyamide 11 (PA 11) flexible or polyamide 12 (PA 12) flexible to DIN 73378.

PA 12 PH: polyamide 12 with plasticizer, stabilized against thermal ageing.

(black tubing) PA 12 PHL: polyamide 12 with plasticizer, stabilized against light-related and thermal ageing.

Material properties:

Very good resistance and insensitivity to oils, greases, lubricants, all fuels, chlorine-free detergents and solvents.

At room temperature good resistance to diluted mineral acids, organic acids, bases and saline solutions 4).

Inappropriate for concentrated mineral acids, concentrated acetic acid, phenols, cresols, chlorinated hydrocarbons, chlorine, acetones and ketones.

Permissible operating temperature: approx. -60 °C to +80 °C

1) The desired length. e.g. 50 meters, has to be added to the order No. **Order example: WVN716-RO6x1.25x50M**

2) These minimal radii can be produced with the help of appropriate bending devices. The tubing has to be heated to 150° for this purpose - max. duration of heating: 20 seconds.

3) The operating pressures were ascertained in keeping with DIN 73378 acc. to the formula $P = \frac{20 \cdot \sigma_v \cdot s \text{ (rated)}}{dm}$

s = rated wall thickness [mm]; dm = da - s; σ_v = reference tension N/mm² at 23 °C

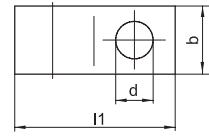
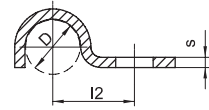
At higher temperatures the pressure drops in keeping with the pressure efficiency as per DIN 73378.

Temperature range [°C]	Pressure efficiency [%]
up to 30	83
up to 40	72
up to 50	64
up to 60	57
up to 70	52
up to 80	47

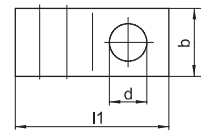
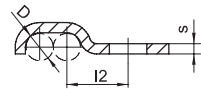
4) In borderline cases it is advisable to inquire beforehand.

Fixing clips

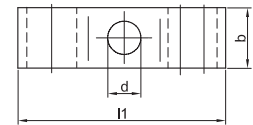
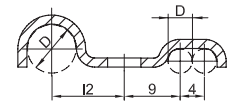
Order No.	for tube diam. D	b	d	l1	l2	s
602-001	2.5	10	3.5	11.25	5	1.5
604-001	4	10	5.5	18.5	9	1.5
606-010	6	10	5.5	20.5	10	1.5
608-001	8	10	5.5	23.5	12	1.5
610-001	10 or 1/8"	10	5.5	25.5	13	1.5
612-001	12	20	6.8	35	18	2



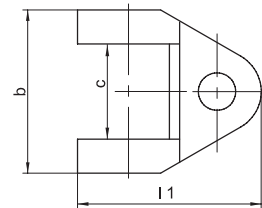
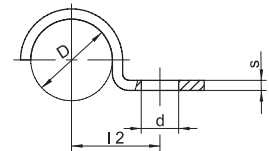
Order No.	for tube diam. D	for tube number	b	d	l1	l2	s
602-002	2.5	2	10	3.5	13.8	5	1.5
604-002	4	2	10	5.5	22.6	9	1.5
604-003	4	3	10	5.5	26.6	9	1.5



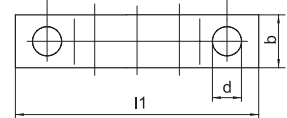
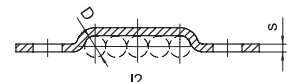
Order No.	for tube diam. D	b	d	l1	l2	s
608-003	8 and 4	10	5.5	34	12	1.5



Order No.	for tube diam. or socket diam. of tee ø D	b	c	d	l1	l2	s
604-004	12	24	14	5.5	27	13	1.5
606-014	14 or 1/4"	30	15	6.3	32.5	16	2
608-004	18 or 3/8"	36	20	7	40	21	2
610-004	20 or 1/2"	36	20	7	40	21	2



Order No.	for tube diam. D	for tube number	b	d	l1	l2	s
604-014	4	4	10	5.5	42	30	1.5
604-015	4	5	10	5.5	46	34	1.5
604-016	4	6	10	5.5	50	38	1.5
604-018	4	8	10	5.5	58	46	1.5
DIN72573-2x6-ST	6	2	10	4.8	39	27	1
DIN72573-3x6-ST	6	3	10	4.8	45	33	1
DIN72573-4x6-ST	6	4	10	4.8	51	39	1
DIN72573-5x6-ST	6	5	10	4.8	57	45	1
DIN72573-6x6-ST	6	6	10	4.8	64	52	1
DIN72573-2x8-ST	8	3	10	4.8	43	31	1
DIN72573-3x8-ST	8	3	10	4.8	51	39	1
DIN72573-4x8-ST	8	4	10	4.8	59	47	1
DIN72573-5x8-ST	8	5	10	4.8	68	56	1
DIN72573-6x8-ST	8	6	10	4.8	76	64	1
DIN72573-2x10-ST	10	2	10	4.8	45	33	1
DIN72573-3x10-ST	10	3	10	4.8	55	43	1
DIN72573-4x10-ST	10	4	10	4.8	67	55	1
DIN72573-5x10-ST	10	5	10	4.8	77	65	1



Material: mild steel

Hoses

Operating pressure: 45 bars / 15 bars (for short time only)

for main lines **Operating pressure 45 bars (for short time only)**

Standard		Metal-braided		Tube diam. d1	Thread d3	Rubber d2	Metal-braided d4	Max. increase in volume at ≈ 80 bars [ccm/m]
Order No. 2)	With tapered sleeve and socket union on both ends Order No.	Order No. 2)	With tapered sleeve and socket union on both ends Order No.					
714-...(-VS)	714-...-K	714-...-M(-VS)	714-...-MK	4	M8x1	11	12 ±0.5	2.5
716-...(-VS)	716-...-K	716-...-M(-VS)	716-...-MK	6	M10x1	13	14 ±0.8	3.6
718-...(-VS)	718-...-K	718-...-M(-VS)	718-...-MK	8	M14x1.5	15	16 ±0.8	4.4

Material:
Hose: mineral-oil-resistant CR rubber inside; 2 layers of braided rayon; outside rubber conditionally oil-resistant, resistant to light cracks and ozone.
Metal braid: galvanized steel wire; tube ends: galvanized steel tubing.

for secondary lines **Operating pressure 15 bars (for short time only)**

Standard		Tube diam. d1	Thread d3	Rubber d2
Order No.	With claw groove for Vogel quick connectors Order No.			
734-... ³⁾	734-...-VS ³⁾	4	M8x1	8.8

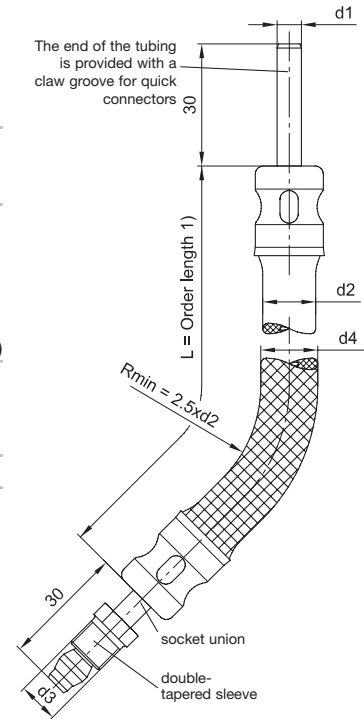
Material Hose: oil-proof rubber inside and outside with a layer of braided rayon
Tube ends: steel tubing
The ends of the tubing are bonded to the hose and cannot be detached.

Permissible operating temperature: -30 °C to +70 °C

- 1) Order length in mm; other lengths available.
Standardized lengths ±5 mm with ø4 tubing: 180, 220, 260, 300, 380, 420, 450, 500, 580
with ø6 tubing: 220, 300, 340, 380, 420, 500, 580
with ø8 tubing: 340, 450, 580

Order examples:
Standard with socket unions and tapered sleeves, ø4 tubing, 300 mm long, order No.: **714-300-K**
Standard ø4 tubing with claw groove for quick connectors, 300 mm long, order No.: **714-300-VS**
Metal-braided ø6 tubing, 420 mm long, order No.: **716-420-M**
Metal-braided ø8 tubing, with claw groove for quick connectors, 450 mm long, order No.: **718-450-M-VS**

- 2) Version with claw groove on ends of tubing for VOGEL quick connectors, order No.: ...-VS
3) **Please note!** These hoses must not be used as main lines but only to connect distributors to lube points.



Hoses suitable for self-installation

Operating pressure: 45 bars

①	②	③	Hose diam. d2	Increase in volume at approx. 40 bars [ccm/m]
Tube Male body diam. d1	Shell Order No. sw	Hose Order No. 1)		
4	406-704-001(-VS) 2)	8 406-804-001 14	11	1
6	406-706-001(-VS) 2)	8 406-806-001 17	13	1.4
8	406-708-001(-VS) 2)	10 406-808-001 19	15	1.4

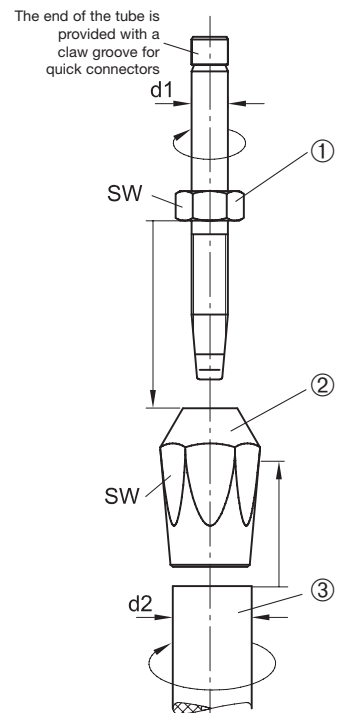
- 1) **Please quote length when ordering.** Max. length available 20 m.
2) Version with claw groove on ends of tubing for VOGEL quick connectors, order No.: ...-VS

Material
Hose: Perbunan, resistant to mineral oils, with two layers of braided rayon
Male body: steel, galvanized
Shell: brass

Permissible operating temperature: -40 °C to +70 °C

Installation instructions

- Apply thin film of oil to thread and inside of hose of parts ① ② ③ to be connected.
- Clamp shell ② in vise and screw in hose ③ by turning it to the left up to the stop.
- Screw in male body ① with a wrench up to the stop. **Do not tighten!**



High pressure hoses

Operating pressure: 280 - 330 bars

Order No.	Tube diam. d1	Hose diam. d2	Length ¹⁾ l ⁺ 5	l1	Permissible operating pressure [bars]	Burst pressure [bars]
SLH6-180	6	10	180	22	330	840
SLH8-180	8	11.8	180	30	320	800
SLH10-180	10	14	180	30	280	700

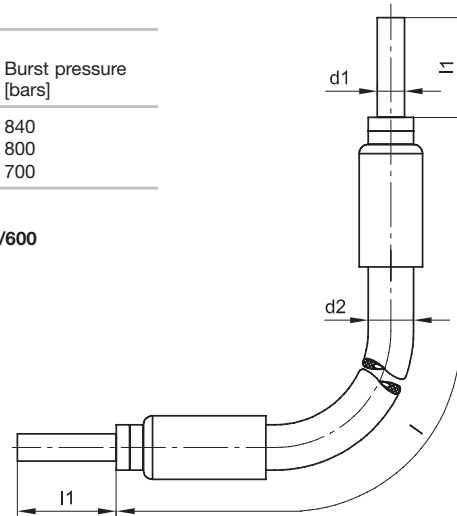
¹⁾ Order length in mm; other lengths available.

Order example: high-pressure hose SLH 8, 600 mm long, **Order No.:** SLH 8/600

Material

Inner liner: PA 11/12 or PE-E
 Reinforcement: 1 braided layer of synthetic fibre with high tensile strength
 Outer cover PA 11/12
 Resistant to mineral oils.

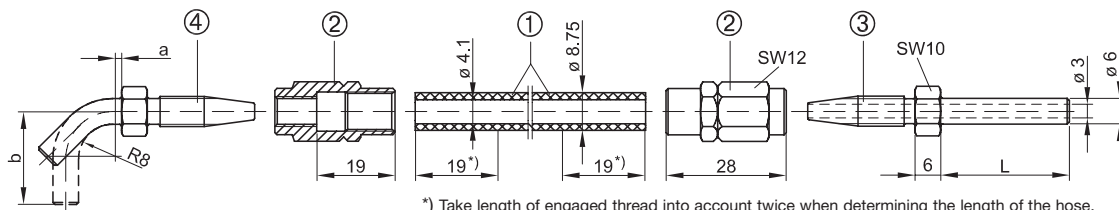
Permissible operating temperature: -40 °C to +100 °C



High pressure hoses for self-installation

Operating pressure: 325 bars / 130 bars

for main lines (connection: pump – feeder) **and secondary lines** (connection: feeder – lubrication point)



^{*)} Take length of engaged thread into account twice when determining the length of the hose.

Designation	Order No.	L	a	b
① High press. hose, max. length supplied 50 m	982-750-091			
High press. hose, max. length supplied 50 m filled with NLGI grade 2 grease	982-750-091+AF2			
② Sleeve	853-540-010			
③ Tube stud, straight	853-370-002(-VS) ¹⁾ 20			
	853-380-002(-VS) ¹⁾ 30			
	853-390-002(-VS) ¹⁾ 66			
④ Tube stud, 45° angle	853-380-003(-VS) ¹⁾			
Tube stud, 90° angle	853-380-003(-VS) ¹⁾	2	21	
	853-390-003(-VS) ¹⁾	13	47	

Technical data

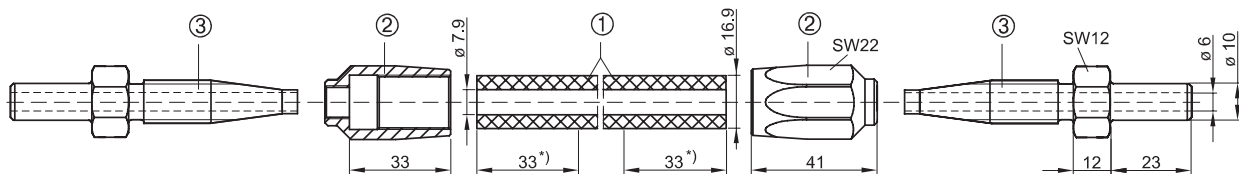
Hose: operating pressure 325 bars
 burst pressure 800 bars
 min. bending radius 35 mm

Materials

hose:
 inner lining: unplasticized polyester
 liner layer: braided synthetic fibers
 outer cover: weatherproof polyurethane
 sleeve, tube stud: steel, galvanized

¹⁾ Version with claw groove on ends of tubing for VOGEL quick connectors, order No.-VS

for main lines (connection: pump – feeder)



^{*)} Take length of engaged thread into account twice when determining the length of the hose.

Designation	Order No.
① High pressure hose, max. length supplied 100 m	WVN711-10
High pressure hose, max. length supplied 50 m filled with NLGI grade 2 grease	WVN711-10+AF2
② Sleeve	406-810-002
③ Tube stud	406-710-002

Technical data

Hose: operating pressure 130 bars
 burst pressure 315 bars
 min. bending radius 55 mm

Materials

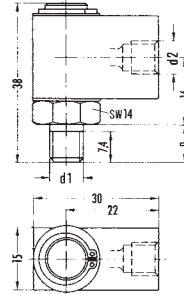
hose:
 inner lining: Perbunan
 liner layer: diagonally woven synthetic fibers
 outer cover: weatherproof neoprene
 sleeve, tube stud: steel, galvanized

Rotating joints

Rotating joints connect fixed tubing with oscillating and rotating machine parts.

Order No.	Tube outside diam.	d1	d2*)	Max. speed [rpm]	Max. pressure oil [bars]	Max. pressure air [bars]
401-504-192	4	G 1/8 A	M8x1	100	30	8
401-504-292	4	M8x1	M8x1	100	30	8
401-506-313	6	M10x1	M10x1	100	30	8

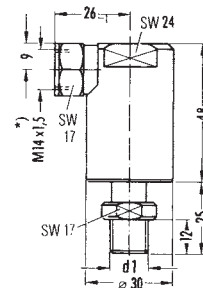
Flow media: mineral oils, oiled compressed air



Order No.	Tube outside diam.	d1	Max. speed [rpm]	Max. pressure oil [bars]	Max. pressure air [bars]
DLY930-2	8	G 1/4 A	1400	20 1)	8
DLY931	8	R 1/4 tap.	1400	20 1)	8

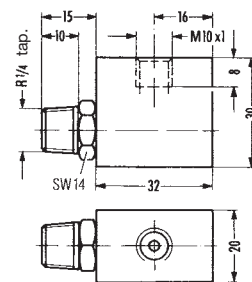
Flow media: mineral oils, oiled compressed air

1) 30 bars in single-line centralized lubrication systems for a short time.



Order No.	Tube outside diam.	Max. speed [rpm]	Max. pressure [bars]
DLY932	6	1400	5

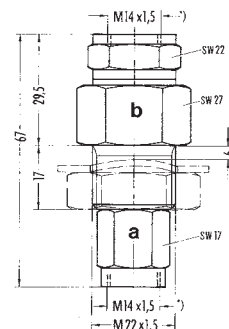
Flow medium: mineral oil



Order No.	Tube outside diam.	Max. speed [rpm]	Max. pressure [bars]
408-120	8	Part a rotating in part b	20

Flow medium: mineral oil

The rotating joint is also available with nut DIN936-M22x1.5 and spring washer DIN137-B22.

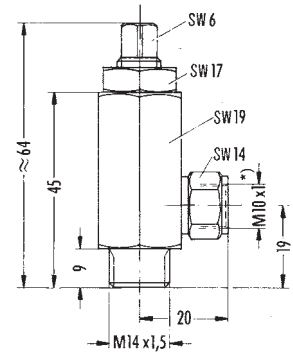


*) Ports tapped for solderless tube connection

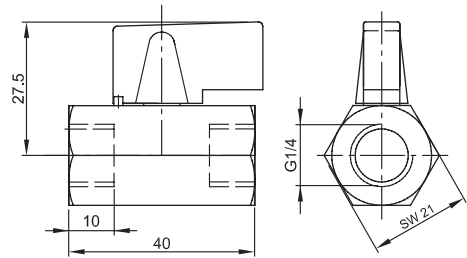
Shut-off valves

Order No.	Max. pressure	Max. temperature	Spindleway
202-085-S	60 bars	80 °C	max. 3 revs.

Direction of flow optional



Order No.	Max. pressure	Max. temperature
161-600-036	16 bars	90 °C



Quick-disconnect couplings

Coupling, complete

Order No.	Tube diam.	d1 *)	l2	Flow direction
207-168-2	6	M10x1	62	optional
207-188-2	8	M14x1.5	66.5	

Outer coupling member

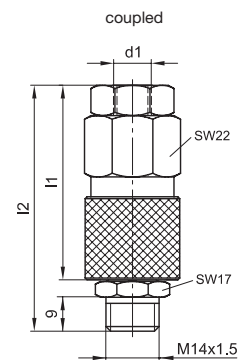
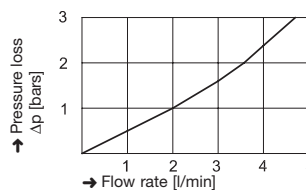
Order No.	Tube diam.	l1
207-168.U7	6	48.5
207-188.U11	8	53

Inner coupling member

Order No.	207-168.U2
-----------	------------

Both coupling members are shut off when disconnected!

Pressure loss as a function of the flow rate based on an operating oil viscosity of 140 mm²/s



Dimensions in mm

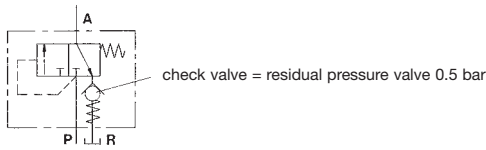
*) Ports tapped for solderless tube connection

Relief valves

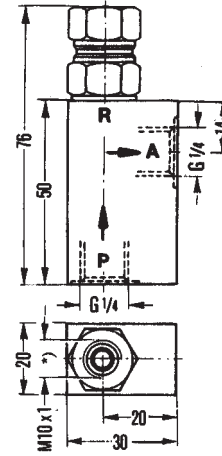
These valves are installed in distributor systems fitted with a pump without pressure relief equipment, mainly in the main line downstream from the pump.

With longer main lines and high-viscosity oils the pressure relief, which influences the reversing of the distributors, can become too long. The installation of the second relief valve at a suitable position in the main line, e.g. at half the main line length, may remedy this problem.

Order No. 202-275-2



P = inlet
A = outlet
R = return

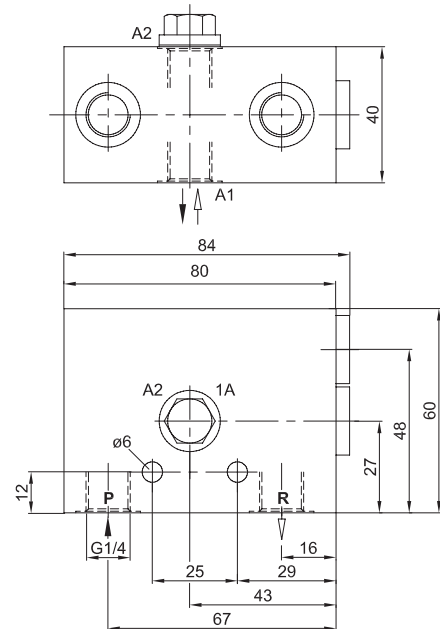
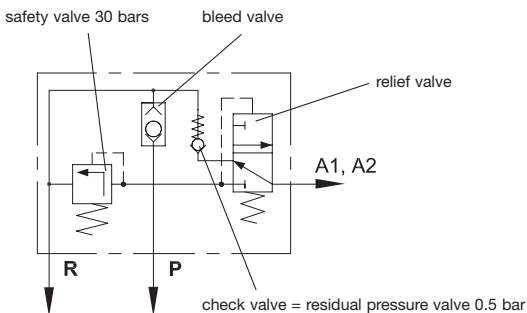
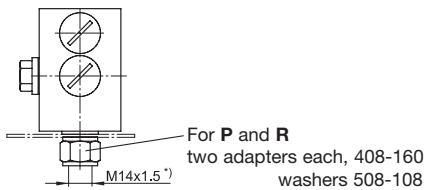


Relief valve with bleed valve and safety valve

Order No. 202-175-30

Adaptors*) for tube diam. 6: Order No. 406-054
for tube diam. 8: Order No. 301-020
for tube diam.10: Order No. 410-163

Fitted to reservoir



*) Ports tapped for solderless tube connection

Safety valves, adjustable (poppet valve)

Characteristic values according to VDI guidelines 3276

Order No.	Hydraulic characteristics		Operating pres. max. [bars]	Oil temperature max.	Viscosity range mm ² /s
	Rated flow rate [l/min]	Adjustable pres. range min. [bar] max. [bars]			
WVN200-10E6	see pressure-loss	0.1 ¹⁾	6 ± 1	40	80 °C
WVN200-10E12		0.1 ¹⁾	12 ± 1.5	40	
WVN200-10E25		0.1 ¹⁾	25 ± 2.5	40	
WVN200-10E35	parameter	0.1 ¹⁾	35 ± 2.5	40	2 to 1000
WVN200-10E60		0.5	60 ± 5	70	

¹⁾ With increasing flow rate and increasing viscosity this value is slightly higher.

General characteristics

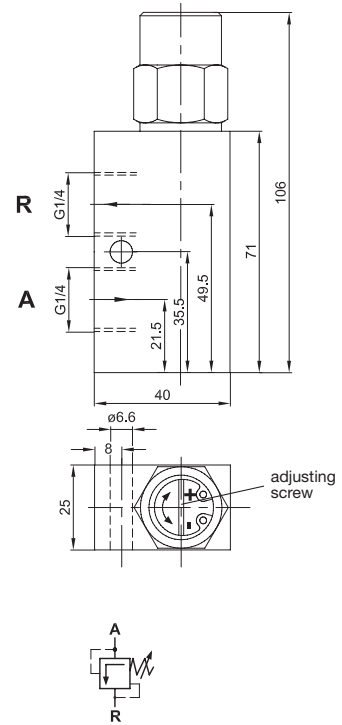
Design: poppet valve with hydraulic cushioning directly controlled
 Lubricant: oil
 Connecting thread: G 1/4
 Mounting position: optional

Adaptors *)

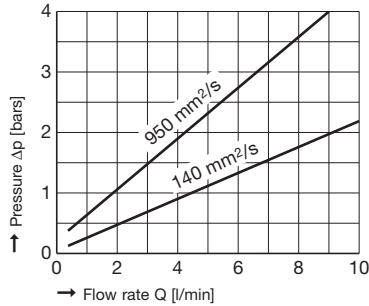
for valves **WVN200-10E6** to **WVN200-10E35**
 f. tube diam. 8: order No. 301-020
 f. tube diam. 10: order No. 410-163
 f. tube diam. 12: order No. 412-163
Washer: order No. 508-108

for valves **WVN200-10E60**
 f. tube diam. 8: order No. 408-403 W
 f. tube diam. 10: order No. 410-403 W
Washer: order No. 508-108

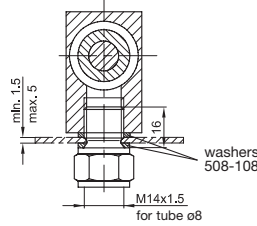
If installed on a reservoir, use **two special adaptors 408-160** with long tube ends.



Pressure loss parameter



With increasing flow rate, the pressure upstream from the valve will also rise in accordance with the curves.



Safety valves (ball valves) for flow rates from 0.5 to 2 l/min

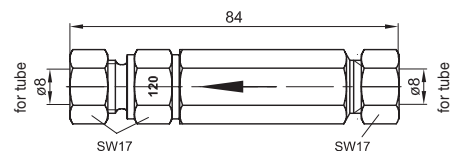
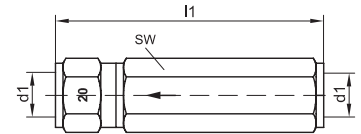
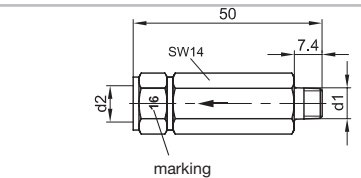
Order No.	Tube diam.	Opening pressure [bars]	Marking	d1	d2 *)
WVN200-4A16	4	16	16	M8x1 tap.	M8x1
WVN200-4A25		25	25		

Order No.	Tube diam.	Opening pressure [bars]	Marking	d1 *)	l1	sw
WVN200-6B0.5	6	0.5	0.5	M10x1	61	14
WVN200-6B16		16	16			
WVN200-6B40		40	40			
WVN200-8B0	8	0.04	0	M14x1.5	71	17
WVN200-8B3		3	3			
WVN200-8B5		5	5			
WVN200-8B12		12	12			
WVN200-8B16		16	16			
WVN200-8B20		20	20			
WVN200-8B32		32	32			
161-212-054 ¹⁾	8	20	20	M14x1.5	84.5	17

¹⁾ This valve is designed as a plunger valve. Because of this design it can also be used for regulating tasks, whereas the ball valves should be used as safety valves.

Order No.	Tube diam.	Opening pressure [bars]	Marking
WVN200-8D50	8	50	50
WVN200-8D75		75	75
WVN200-8D120		120	120
WVN200-8D220		220	220

Cutting sleeve screw unions according to DIN 2353



Dimensions in mm

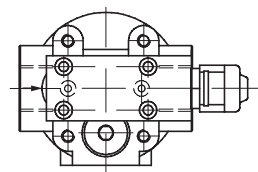
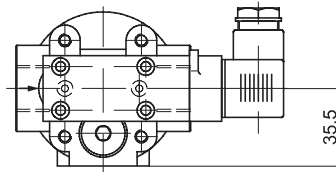
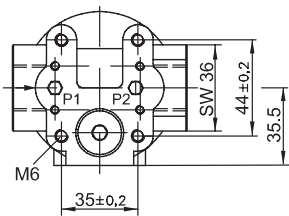
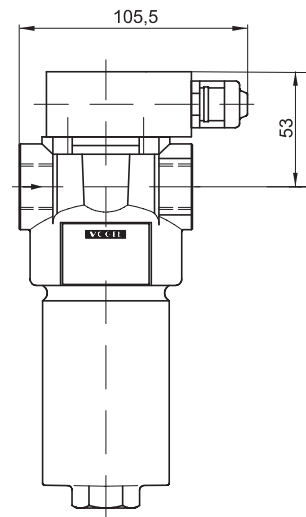
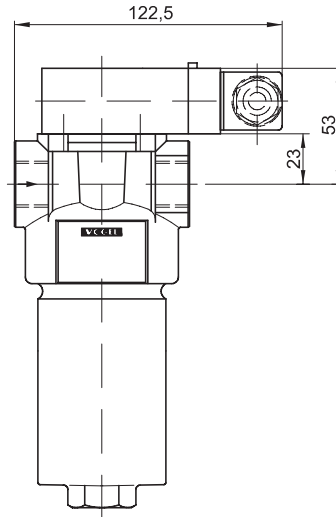
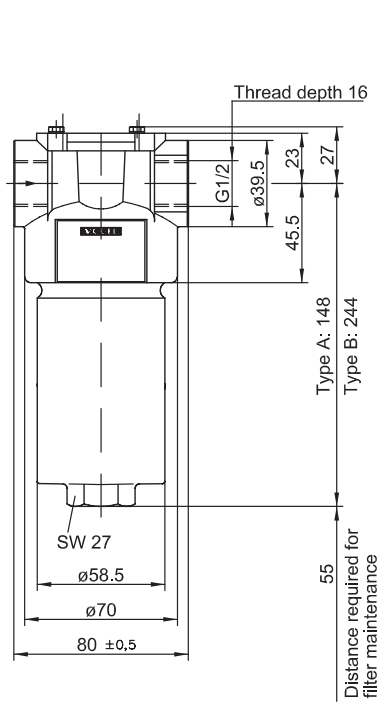
*) Ports tapped for solderless tube connection

Pressure filters

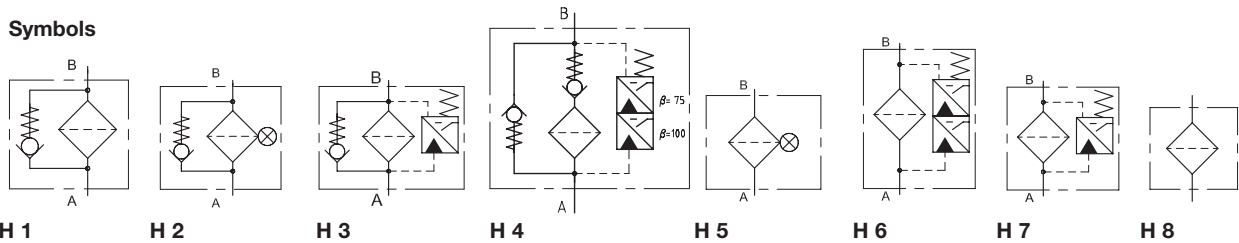
Version without fouling indicator
fouling indicator can be retrofitted

Version with electrical fouling indicator
(176-200-001 or 176-200-002)

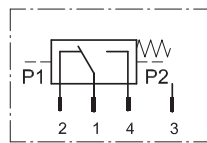
Version with visual fouling indicator
(169-200-110; 169-200-111 or 169-200-118)



Symbols

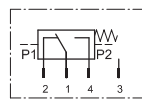


Unit socket
DIN 43650-AF3

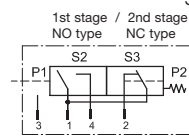
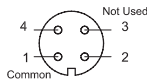


E 1

Sensor socket M12x1

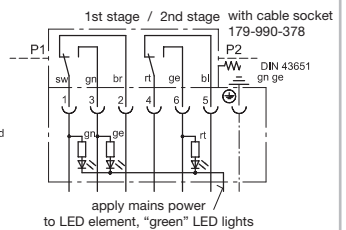
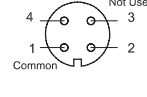


E 2



E 3

Sensor socket M12x1



E 4

Pressure filters

Type	Filter compl. Order No.	Sym- bol) H/E/V	Rated flow [l/min]	Fine- ness [µm]	Filtra- tion 1) filter- material	ACFTD- capacity [g/ccm] (filter area)	Port	Bypass or reversing valve opening press. [bars]	Fouling indicator Order No.	Operating pressure [bars]	Filter element press.-stable up to [bars]	Spare filter element Order No.
A A	169-460-170 169-460-181	H8/- H5/V	16	3	fleece	1.8	G 1/2	-	- 169-200-118	63	160 80	169-400-078
A A A A	169-460-110 169-460-111 169-460-112 169-460-112-V70	H1/- H2/V H3/E1 H3/E2	40		paper	4.2	G 1/2	7	- 169-200-111 176-200-002 176-200-003	63	20	169-400-035
B B B	169-460-140 169-460-142 169-460-143	H8/- H7/E1 H6/E4	63		fleece	7	G 1/2	- 176-100-002	176-200-002	63	160	169-400-065
A A A A	169-460-145 169-460-146 169-460-141 169-460-184	H6/E4 H8/- H7/E1 H5/V	40	10	fleece	3.2	G 1/2	-	176-100-002 - 176 200-002 169-200-118	63	160	169-400-064
A A A A A A A A	169-460-232 169-460-233-V57 169-460-233-V64 169-460-233-V70 169-460-234 169-460-234-V57 169-460-234-V64 169-460-234-V70	H4/E3 H3/E2 H3/E2 H3/E3 H4/E3 H4/E3 H4/E3 H4/E3	25	10	fleece	3.4	G 1/2	RV 2x0.25	176-200-002 176-200-003 176-200-003 176-200-003 176-200-004 176-200-004 176-200-004 176-200-004	63	160	169-400-130
A A A	169-460-130 169-460-131 169-460-132	H1/- H2/V H3/E1	55	15	paper	6	G 1/2	7	- 169-200-111 176-200-002	63	20	169-400-038
B B	169-460-150 169-460-152	H1/- H3/E1	80	15	paper	12	G 1/2	7	- 176-200-002	63	20	169-400-050
A A A A	169-460-160 169-460-162 169-460-186 169-460-187	H8/- H7/E1 H8/- H5/V	55	20	fleece	5	G 1/2	-	- 176-200-001 - 169-200-118	63	160	169-400-039
A A A A A A A A	169-460-115 169-460-116 169-460-117 169-460-123 169-460-120 169-460-121 169-460-122	H8/- H6/E4 H5/V H5/V H1/- H2/V H3/E1	50	60	screen fabric	(245 ccm)	G 1/2	- - - - 3.5 3.5 3.5	- 176-100-002 169-200-111 169-200-110 - 169-200-110 176-200-001	63	20	169-400-041

*) See page 30 for symbols (H = hydraulic, E = electr., V = visual)

Applications

In the pressure circuits of hydraulic and lubrication systems.

Features

Protection against wear:

by filter elements that meet maximum demands on the cleanliness class during full-flow filtration.

Functional protection:

by installation directly upstream of the hydraulic components. Individual specification of the rated volumetric flow makes sure the bypass valve remains closed at $v \leq 200 \text{ mm}^2/\text{s}$.

Filter elements

Flow passes through from the outside to the inside. Thanks to star crimping of the filter material:

- large filter surface
- high collection of dirt
- low pressure loss
- specially long intervals between changes

Filter maintenance

A fouling indicator signals when it's time to service the filter, so optimal exploitation of the filter elements is achieved.

Materials

Head: Al-alloy

Bottom part of housing: Al-alloy

Seals: NBR (FPM on request)

Filter material: fleece – based on inorganic microfiber fleece
paper – cellulose, impregnated with resin.

Accessories

Electrical and/or visual fouling indicators are available on request – optionally with two or more switching points.

Filters for higher pressures on request with indication of the following details:

- rated flow [l/min] and pressure [bars]
- filter fineness [µm] or desired particle cleanliness to ISO 4406. e.g. 13/9.
- with or without bypass valve
- visual or electrical fouling indicator

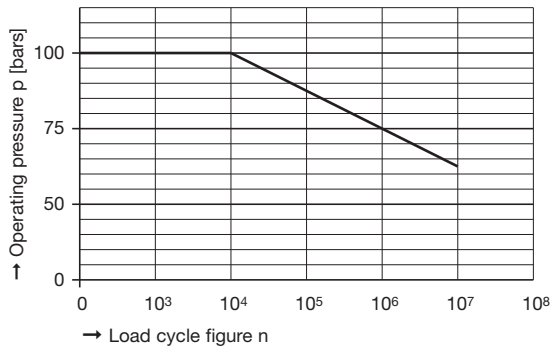
Pressure filters

Characteristics

Operating pressure

0 ... 63 bars, min. 10⁷ load cycles
 Rated pressure based on DIN 24550
 0 ... 100 bars, min. 10⁴ load cycles
 Quasi-static operating pressure

Permissible pressures for other load-cycle figures



Rated volumetric flow

Up to 80 l/min (cf. table).

The indicated volumetric flow rates are based on the following criteria:

- Closed bypass when $v \leq 200 \text{ mm}^2/\text{s}$
- Useful life > 1000 hours of operation with an average amount of fouling amounting to 0.08 g per l/min volumetric flow
- Flow rate in the connecting lines:
 up to 40 bars $\leq 4.5 \text{ m/s}$
 up to 250 bars $\leq 8.0 \text{ m/s}$

Filter fineness

3 μm ... 20 μm
 β values to ISO 4572-81 (cf. table and diagram Dx)

ACFTD capacity

α values in grams of test contaminant ACFTD determined in accordance with ISO 4572-81

Working substances

Mineral oil and ecofriendly hydraulic fluids

Temperature range of working substances

- 30 to +100 °C (- 40 °C in the starting phase)

Viscosity at rated volumetric flow

- at operating temperature: $v < 60 \text{ mm}^2/\text{s}$
- as starting viscosity: $v_{\text{max}} = 1200 \text{ mm}^2/\text{s}$

Mounting position

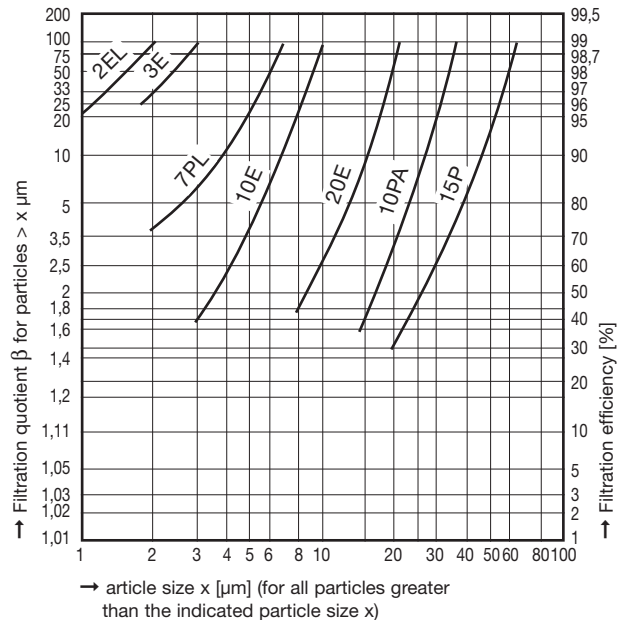
Preferably vertical, head on top

Connection

Threaded connection to ISO 228 or DIN 13. (See table for size)

DX characteristics for filter finesses

Filtration quotient β as a function of the particle size x determined in a multipass test to ISO 4572-81.



The abbreviations stand for the following filtration figures and/or finesses:

With Exapor and paper elements:

- 3E** = $\beta_3 \geq 75$ fleece (3 μm absolute)
- 10E** = $\beta_{10} \geq 75$ fleece (10 μm absolute)
- 20E** = $\beta_{20} \geq 75$ fleece (20 μm absolute)
- 10PA** = paper (10 μm nominal)
- 15P** = paper (15 μm nominal)

Scattering around characteristics 10PA and 15P has to be expected due to the structure of the filter material used for the 10PA and 15P elements.

With screen elements:

- 60 S** = screen fabric with mesh width of 60 μm

Tolerances for mesh widths to DIN 4189.

For special applications it is also possible to use special filter materials with finesses that deviate from these characteristics.

Screen filters

These filters should preferably be used in delivery lines for intermittently operated centralized lubrication systems!
 To clean the scree filter element, screw out the hexagon nut (WAF13). The filter element can then be pulled out without detachment of the tubing.

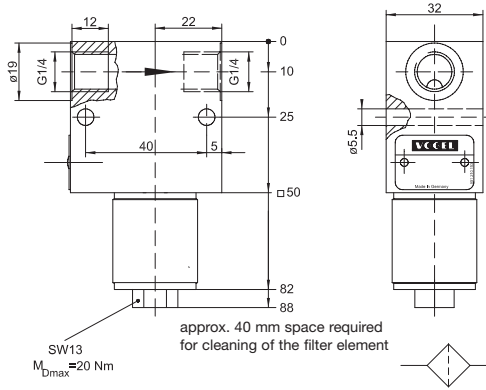


Fig. 1

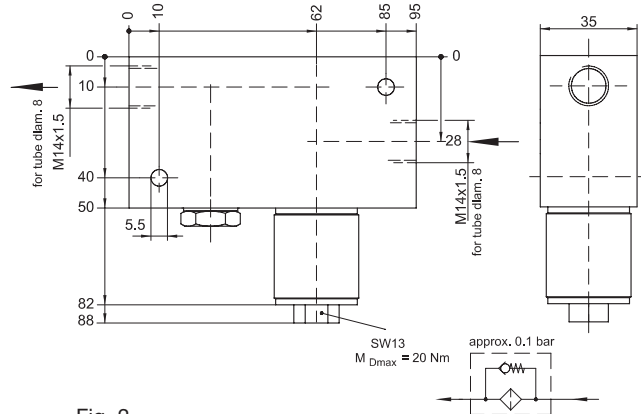


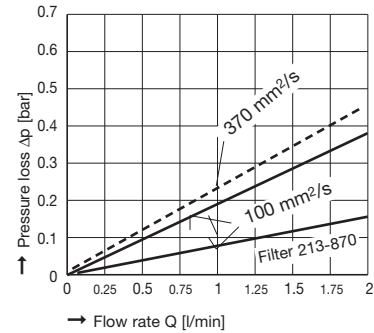
Fig. 2

Order No.	Flow rate [l/min]	Operating pressure max. [bars]	Mash opening width [mm]	Screen area [cm ²]	Fig.	Mounting position
213-870	2 2)	60	0.063	21	1	preferably as shown
213-870F *)		60	0.16	20	1	
213-880	2 1)	60	0.025	21	1	
213-890	2	60	0.32	21	1	
213-900	2 1)	45	0.025	21	2	
213-910 **)		60	0.025	20	1	
213-920	2 1)	60	0.01	21	1	
213-930	2 1)	45	0.16	21	2	
213-940 ***)	2 1)	60	0.01	21	-	

- 1) Based on an operating viscosity of the lubricant amounting to 100 mm²/s, a pressure loss of approx. 0.38 bar and a clean filter.
- 2) Based on an operating viscosity of the lubricant amounting to 370 mm²/s, a pressure loss of approx. 0.5 bar and a clean filter.
- *) for grease, NLGI grades 000 to 2
- **) for grease, NLGI grade 000
- ***) filter with fouling indicator

Adaptors

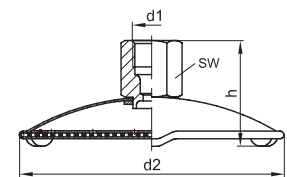
for tube diam. 6: order No. 406-054
 for tube diam. 8: order No. 301-020
 for tube diam. 10: order No. 410-163
Washer: order No. 508-108



Strainers

These filters are designed for pumps in intermittently operated centralized lubrication systems.

Order No.	Tube diam.	d1 *)	d2	h	sw	Wire mesh acc. to DIN 4189
206-444	6	M10x1	70	28	14	0.56 x 0.22
208-444	8	M14x1.5	70	33	17	0.56 x 0.22
208-555	8	M14x1.5	49	33	17	0.56 x 0.22
210-444	10	M16x1.5	70	35	19	0.56 x 0.22
210-555	10	M16x1.5	49	35	19	0.56 x 0.22
212-444	12	M18x1.5	70	38	22	1.5 x 0.3



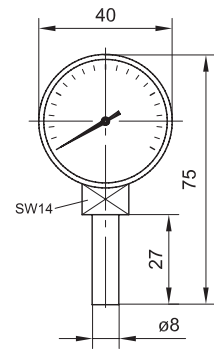
Dimensions in mm

*) Ports tapped for solderless tube connection

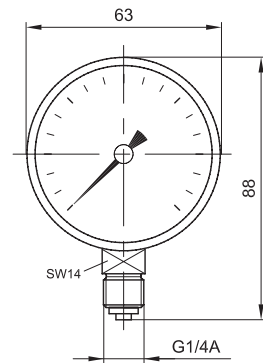
Pressure gauges

Order No.	Indication range	
248-602.25	0-10 bars	
169-102-506	0-25 bars / 0-360 psi	
248-602.20	0-40 bars	for grease
169-104 008	0-40 bars	for oil
169-106-004	0-60 bars	

Fixed by means of a double tapered sleeve and socket union (solderless tube connection) in counterbore acc. to DIN 3854/DIN 3862.



Order No.	Indication range	Adaptor Order No.	d
169-100-100	-1-0 bar		
169-101-004	0-10 bars		
248-604.00	0-25 bars		
248-602.00	0-40 bars		
248-603.00	0-60 bars	301-134	M10x1
169-106-007	0-6 Mpa		
248-601.00	0-100 bars	301-034	M14x1.5
169-116-000	0-160 bars		
169-120-000	0-250 bars		
248-605.00	0-400 bars		

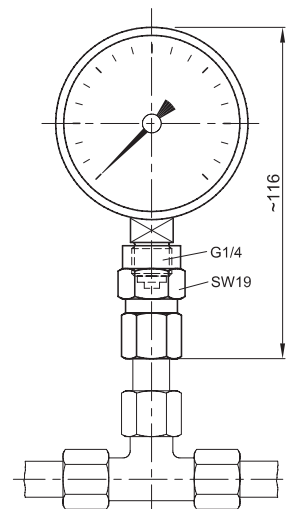


Washer, order No. 248-610.02, must be ordered separately for every pressure gauge.

Gedämpfte Ausführung mit Glycerinfüllung

Order No.	Indication range	Mounting position	Pressure gauge connectors Order No.	for tube diam.
248-604.10	0-25 bars	vertically		
169-106-003	0-60 bars / 0-800 psi			
248-603.10	0-60 bars		408-411	8
169-106-009	0-6 Mpa		410-411	10
248-601.10	0-100 bars / 0-1450 psi		412-411	12
169-110-009	0-10 Mpa			
169-125-000	0-250 bars / 0-3600 psi			
169-140-001	0-400 bars			

Washer, order No. 248-610.02, must be ordered separately for every pressure gauge.

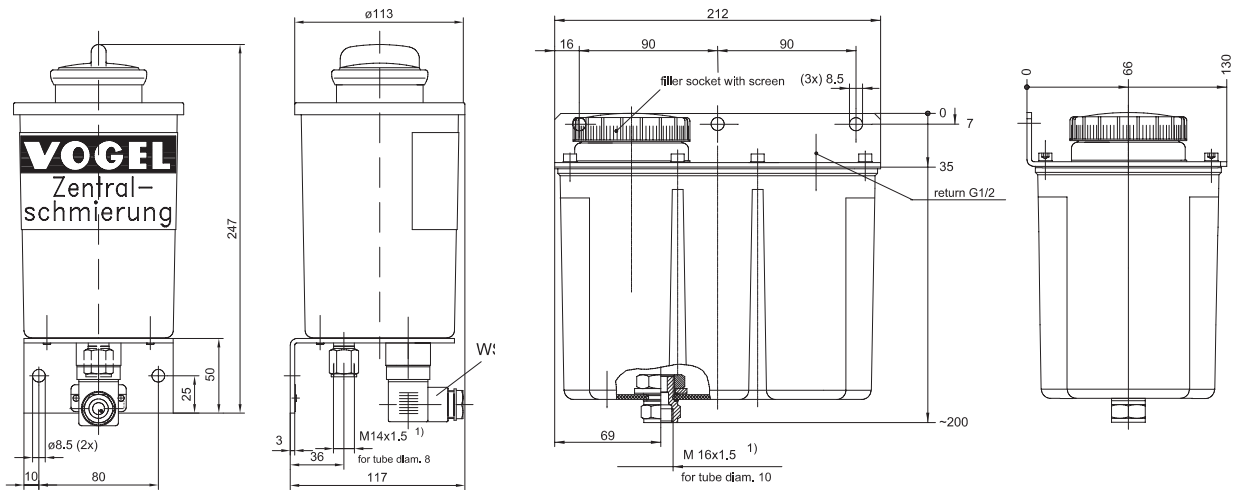


*) Ports tapped for solderless tube connection nach DIN 2367

Oil reservoirs – plastic

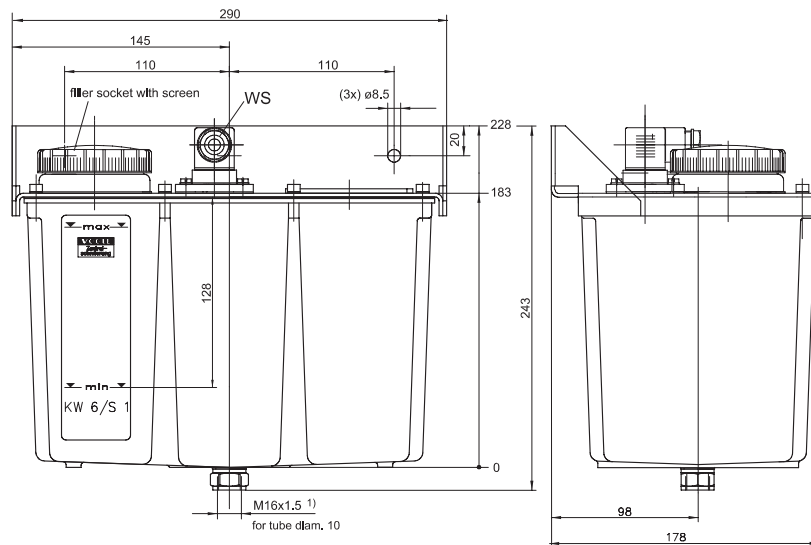
Plastic reservoirs

Order No.	Reservoir capacity [liters]	Level indicator WS	Type of contact	Seal material
K1	1	–	–	NBR
KW1	1	for min. filling level	changeover	NBR
KW1-S2	1	for min. filling level	NC	NBR
K3-S2	3	–	–	NBR
KW3-S1	3	for min. filling level	changeover	NBR
KW3-S3	3	for min. and max. filling level	1 NC, 1 NO	NBR
KW3-S5	3	for min. filling level with advance warning	2 NCs	NBR
K6-S5	6	–	–	NBR
KW6-S1	6	for min. filling level	changeover	NBR
KW6-S2	6	for min. filling level with advance warning	2 NCs	NBR
KW6-S81	6	for min. filling level	changeover	FPM
KW6-V57	6	for min. filling level with advance warning	2 NCs	NBR



1-liter reservoir (shown: KW1)

3-liter reservoir (shown: K3-S2)



6-liter reservoir (shown: KW6-S1)

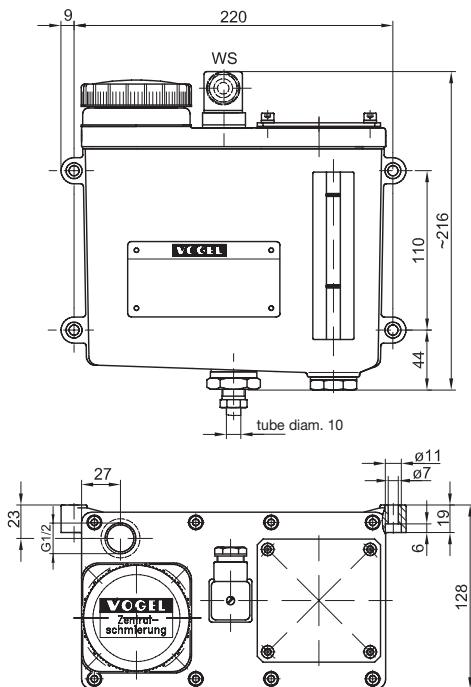
Dimensions in mm

1) Ports tapped for solderless tube connection nach DIN 2367

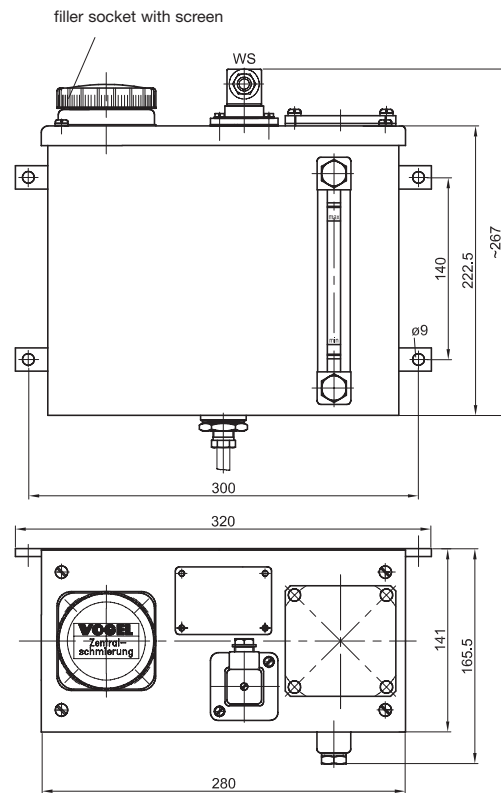
Oil reservoirs – metal

Metal reservoirs

Order No.	Reservoir capacity [liters]	Level indicator WS	Type of contact	Seal material
B3-S1	3	–	–	NBR
BW3-S9	3	for min. filling level with advance warning	2 NOs	NBR
BW3-S81	3	for min. filling level	changeover	FPM
162-210-005	3	for min. filling level	changeover	NBR
B7	6	–	–	NBR
BW7-S6	6	for min. and max. filling level	2 NCs	NBR
BW7-S7	6	for min. filling level with advance warning	2 NCs	NBR
BW7-S8	6	for min. filling level	changeover	FPM
BW7-S11	6	for min. filling level with advance warning	1 NO, 1 NC	NBR
BW7-S12	6	for min. filling level with advance warning	1 NO, 1 NC	NBR
162-310-005	6	for min. filling level	changeover	NBR



3-liter reservoir



6-liter reservoir (shown: BW7-S6)

DEVCO CORPORATION
 300 LANIDEX PLAZA
 PARSIPPANY, NJ 07054
 USA

TEL: 973-781-0200
 FAX: 973-781-0234
 EMAIL: INFO@DEVCOCORP.COM