

**DESCRIPTION**

These fittings from Lubriquip are for use with Trabon lubrication systems. The fittings are designed for simplicity of use and long life. They provide a solid base for mounting pressure gauges and performance indicators...for connecting hoses to lube lines...for attaching lines to machines or equipment...for adding branch lines or facilitating abrupt changes in line direction.

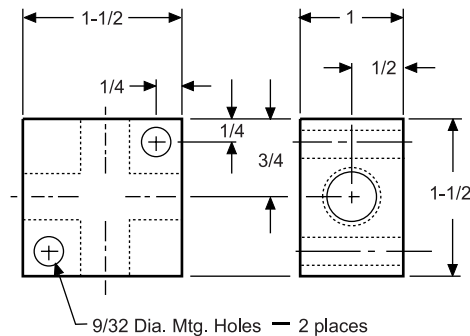
**HOW TO ORDER**

Use **both** the full name of the fitting and its Part Number.

**Dimensions — Inches**

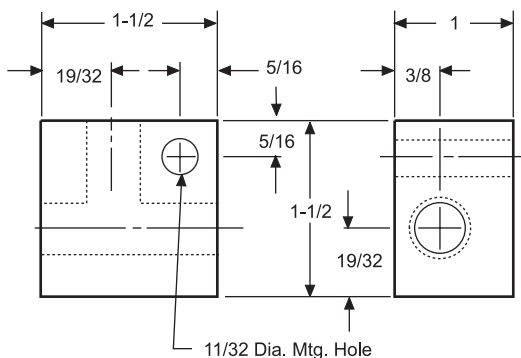
**Cross Anchor Fitting (zinc-plated steel)**

1/4 NPSF, Part No. .... 509-188-000  
 1/8 NPSF, Part No. .... 509-189-000

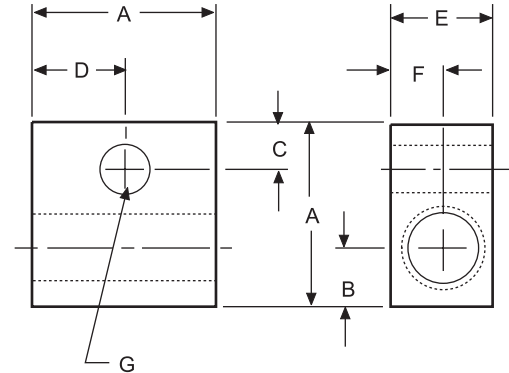


**Anchor Tee (zinc-plated steel)**

1/4 NPSF, Part No. .... 509-178-000

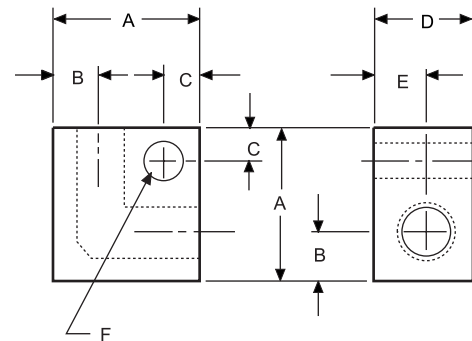


**180° Straight Anchor Fitting (zinc-plated steel)**



NPSF	DIMENSIONS							PART NUMBER
	A	B	C	D	E	F	G (DIA.)	
1/8	1-1/4	11/32	5/16	5/8	3/4	3/8	9/32	509-180-000
1/4	1-1/2	19/32	5/16	3/4	1.0	3/8	11/32	509-185-001
1/2	1-3/4	9/16	7/16	7/8	1-1/4	5/8	1/2	509-195-000

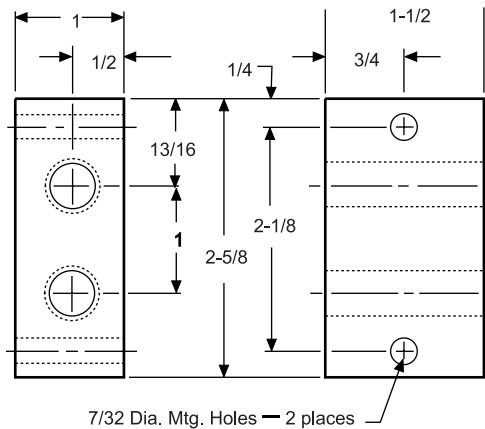
**90° Angle Anchor Fitting (zinc-plated steel)**



NPSF	DIMENSIONS						PART NUMBER
	A	B	C	D	E	F (DIA.)	
1/8	1-1/4	5/16	5/16	3/4	3/8	9/32	509-170-000
1/4	1-1/2	19/32	5/16	1	3/8	11/32	509-175-001
1/2	1-3/4	9/16	7/16	1-1/4	5/8	1/2	509-196-000

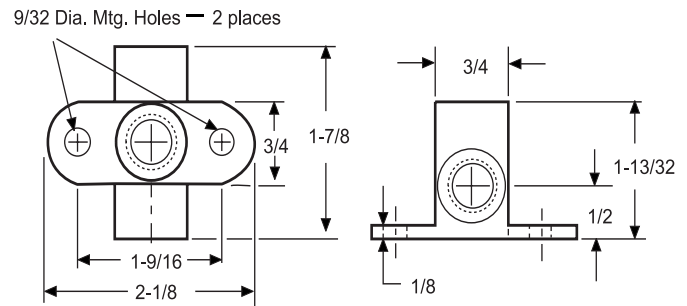
**180° Straight Anchor Fitting-2 Lines** (zinc-plated steel)

1/4 NPSF, Part No ..... 542-171-000



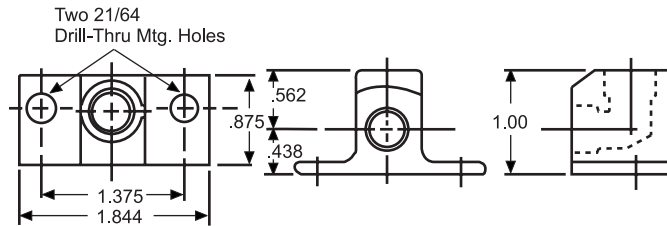
**Wing Tee** (zinc-plated steel)

1/4 NPTF, Part No. .... 509-164-001

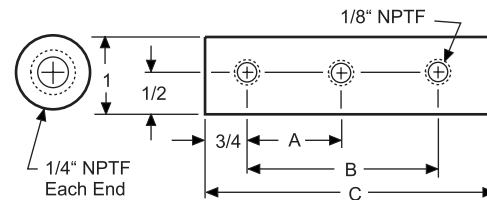


**90° Drop Elbow** (brass)

1/8 NPSF, Part No ..... 509-150-000



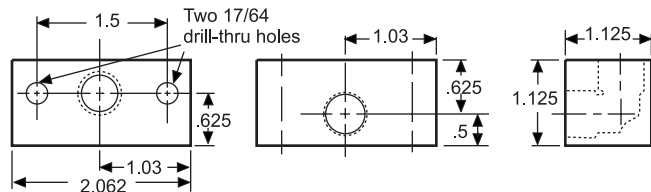
**Manifold** (zinc-plated steel)



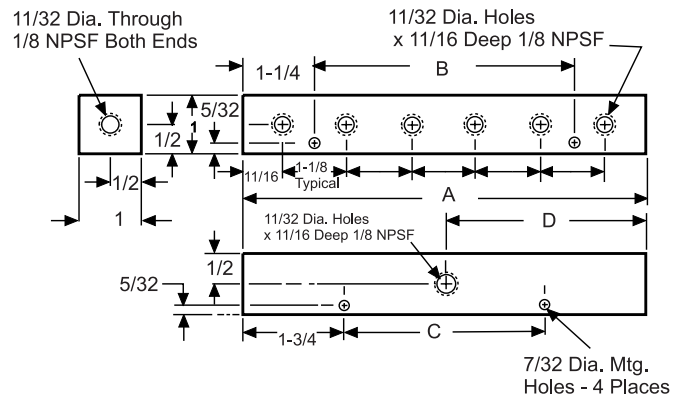
NO. OF OUTLETS	DISTANCE BETWEEN OUTLETS			PART NUMBER
	A	B	C	
2	1/2	1-1/2	3	482-000-020
5	1-1/2	6	7-1/2	482-000-050
6	1-1/2	7-1/2	9	482-000-060

**Elbow Anchor** (zinc-plated steel)

1/4 NPT, Part No ..... 509-155-001



**Manifold** (aluminum), 1/8 NPSF



NO. OF OUTLETS	DIMENSIONS				PART NUMBER
	A	B	C	D	
7	8-1/8	4-1/2	3-1/2	3-1/2	510-764-000
9	10-3/8	6-3/4	5-3/4	4-5/8	510-764-190